

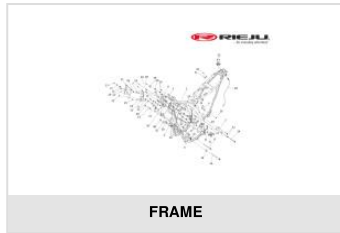


AVENTURA 307 RALLY NEGRA 2026

Exploded



ENGINE - EFI COMPONENTS



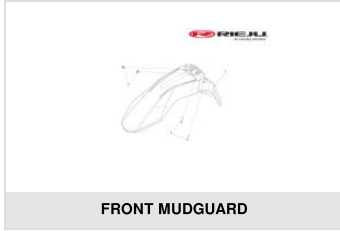
FRAME



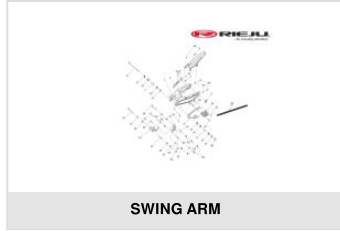
STEERING HEAD



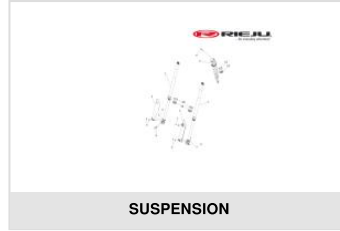
HANDLEBAR



FRONT MUDGUARD



SWING ARM



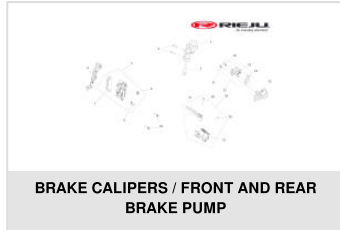
SUSPENSION



INTAKE SYSTEM



RUEDA DELANTERA



BRAKE CALIPERS / FRONT AND REAR
BRAKE PUMP



ABS ASSY.



REAR WHEEL



FOOTREST - LEVERS



SIDE STAND



REAR MUDGUARD - LICENSE PLATE LIGHT
- REAR TURN SIGNAL ASSY.



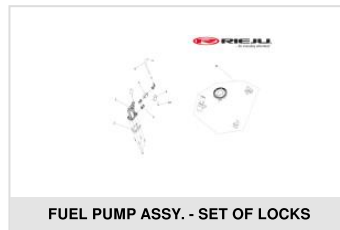
FRONT HEADLIGHT



COOLING SYSTEM - EXHAUST



FUEL TANK



FUEL PUMP ASSY. - SET OF LOCKS



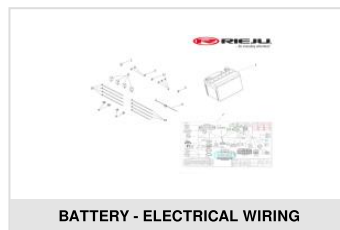
FUEL TANK COVERS



BODY SIDE COVER COMPONENTS



ENGINE PROTECTOR



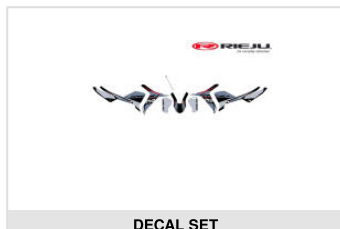
BATTERY - ELECTRICAL WIRING



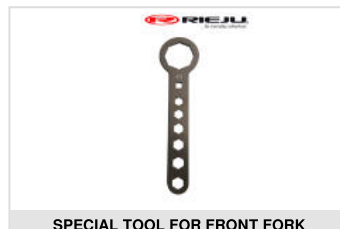
SEAT - REAR HANDLE



ELECTRICAL COMPONENTS











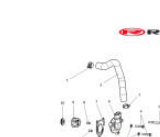
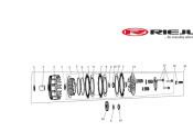




DECAL SET

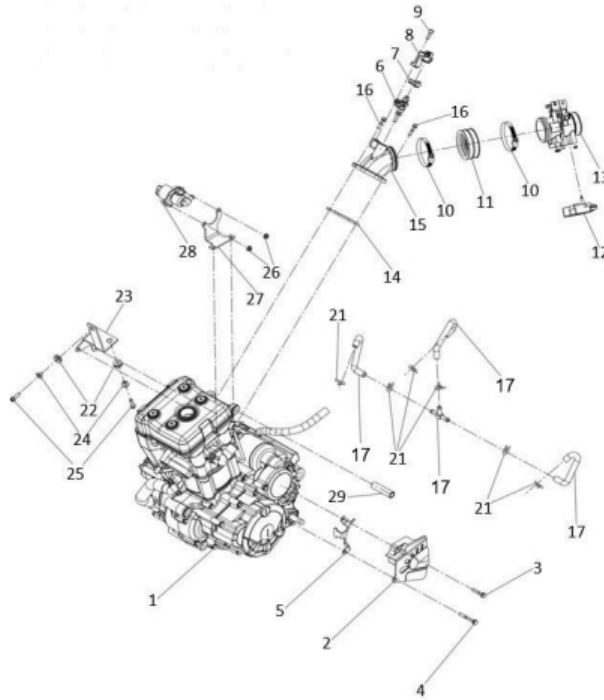


SPECIAL TOOL FOR FRONT FORK

MOTOR AVENTURA 307 RALLY

 <p>Exploded view diagram of the cylinder head assembly, showing various components like valves, springs, and the head cover.</p>	 <p>Exploded view diagram of the cylinder assembly, including the cylinder block, piston, and cooling fins.</p>	 <p>Exploded view diagram of the valves and timing chain mechanism, showing the camshaft and timing chain.</p>	 <p>Exploded view diagram of the oil sump (carter), showing the oil pan and its mounting points.</p>
CYLINDER HEAD	CYLINDER	VALVES - TIMING CHAIN	CARTER
 <p>Exploded view diagram of the clutch cover, showing the cover plate and its mounting hardware.</p>	 <p>Exploded view diagram of the right side cover, showing the cover plate and its mounting hardware.</p>	 <p>Exploded view diagram of the crankshaft, piston, and balancer shaft assembly, showing the main components and their connections.</p>	 <p>Exploded view diagram of the gearbox, showing the housing, gears, and shafts.</p>
CLUTCH COVER	RIGHT COVER	CRANKSHAFT - PISTON - BALANCER SHAFT	GEARBOX
 <p>Exploded view diagram of the selector shaft, showing the shaft and its associated components.</p>	 <p>Exploded view diagram of the oil pump, showing the pump housing and its internal components.</p>	 <p>Exploded view diagram of the cooling system, showing the water pump, fan, and radiator.</p>	 <p>Exploded view diagram of the clutch (embrague), showing the clutch plate and its mounting hardware.</p>
SELECTOR SHAFT	OIL PUMP	COOLING SYSTEM	EMBRAGUE
 <p>Exploded view diagram of the starter motor, showing the motor housing and its internal components.</p>	 <p>Exploded view diagram of the stator assembly, showing the stator housing and its internal components.</p>		
STARTER	STATOR ASSY.		

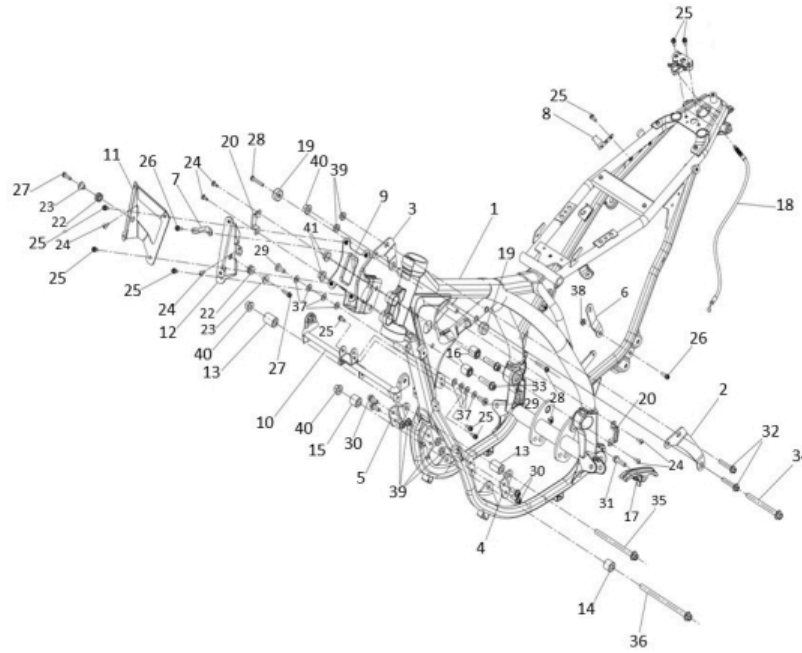
ENGINE - EFI COMPONENTS



1	COMPLETE ENGINE RALLY 307 0/005.082.4701 (u. 1)
2	CHAIN SPROCKET GUARD 0/000.220.4701 (u. 1)
3	SCREW M6x30 0/000.460.4787 (u. 1)
4	SCREW M6x45 0/000.460.4788 (u. 1)
5	SPROCKET GUARD BRACKET 0/000.980.4730 (u. 1)
6	FUEL INJECTOR RALLY 307 0/005.158.4701 (u. 1)
7	AGRAFE INJECTEUR 0/000.240.4704 (u. 1)
8	INJECTOR BRACKET 0/000.980.4703 (u. 1)
9	INJECTOR BRACKET SCREW 0/000.460.4711 (u. 1)
10	CLAMP 60-80 0/000.680.4715 (u. 2)
11	INJECTION BODY PIPE 0/000.360.4701 (u. 1)
12	TPS SENSOR 0/001.010.4707 (u. 1)
13	FUEL INJECTION BODY 0/005.158.4702 (u. 1)
14	INJECTION BODY PIPE GASKET 0/000.490.4710 (u. 1)
15	INLET PIPE INJECTION BODY 0/000.360.4703 (u. 1)

16	TORNILLO HEXAGONAL M6x25 0/000.460.4701 (u. 2)
17	CJTO TUBOS DESVAPORIZADORES 0/000.290.4702 (u. 1)
21	OIL HOSE CLAMP Ø12 0/000.680.4722 (u. 3)
22	SILENTBLOCK Ø8xØ18xØ10.5X8 0/000.360.4706 (u. 2)
23	ABS MODULE BRACKET 0/000.980.4729 (u. 1)
24	SEPARADOR 6x18x10 0/000.480.4701 (u. 2)
25	SCREW M6x20 0/000.460.4721 (u. 2) HEXAGONAL FLANGE SCREW DIN 6921 TX30 M6x20 GRADE 10.9 GEOMET 0/000.460.9181 (u. 2)
26	NUT M6 0/000.340.4704 (u. 2)
27	SOPORTE MOTOR PASO A PASO 0/000.980.4719 (u. 1)
28	STEP CONTROL VALVE V2 0/005.082.4704 (u. 1)
29	SPACER Ø15xØ11X56 0/000.480.4724 (u. 1)

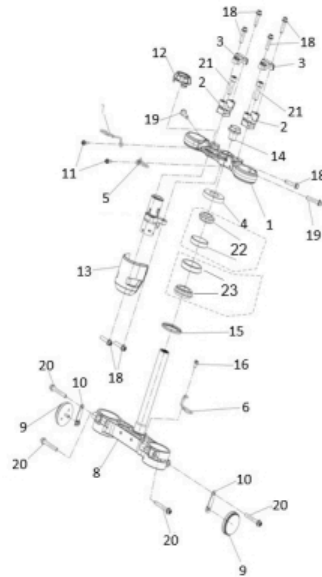
FRAME



1	FRAME RALLY 307 0/000.010.4701 (u. 1)
2	UPPER ENGINE BRACKET LH 0/000.980.4709 (u. 1)
3	UPPER ENGINE BRACKET RH 0/000.980.4710 (u. 1)
4	FRONT ENGINE BRACKET LH 0/000.980.4711 (u. 1)
5	FRONT ENGINE BRACKET RH 0/000.980.4712 (u. 1)
6	AIR FILTER BRACKET 0/000.980.4713 (u. 1)
7	SIDE STAND SPRING HOOK 0/000.980.4728 (u. 1)
8	LIGHT RELAY BRACKET 0/000.980.4714 (u. 1)
9	FRONT HEADLIGHT BRACKET 0/000.980.4715 (u. 1)
10	LOWER FUEL TANK BRACKET 0/000.980.4716 (u. 1)
11	HEADLIGHT BRACKET RH 0/000.980.4717 (u. 1)
12	HEADLIGHT BRACKET LH 0/000.980.4718 (u. 1)
13	FRONT UPPER ENGINE SPACER 0/000.480.4720 (u. 2)
14	FRONT LH ENGINE SPACER 0/000.480.4721 (u. 1)
15	FRONT RH ENGINE SPACER 0/000.480.4722 (u. 1)

16	HEADLIGHT BRACKET BUSHING 0/000.480.4723 (u. 2)	
17	CHAIN SLIDER 0/000.360.4705 (u. 1)	
18	SEAT LOCK CABLE 0/000.550.4701 (u. 1)	
19	FUEL TANK SILENTBLOCK 0/000.360.4710 (u. 2)	
20	U TYPE CLIP 0/000.680.4721 (u. 2)	
22	SILENTBLOCK Ø8xØ20xØ13x12 0/000.360.4716 (u. 2)	
23	SPACER Ø6xØ22x12 0/000.480.4704 (u. 2)	
24	TORNILLO TORX. M5x12 0/000.460.4714 (u. 6)	
25	SCREW M6x12 0/000.460.4719 (u. 9)	
26	SCREW M6x16 0/000.460.4720 (u. 2)	Obsolete
27	SCREW M6x20 0/000.460.4721 (u. 2)	
	HEXAGONAL FLANGE SCREW DIN 6921 TX30 M6x20 GRADE 10.9 GEOMET 0/000.460.9181 (u. 2)	
28	SCREW M6x35 0/000.460.4722 (u. 2)	
29	HEX BOLT M8x45 0/000.460.4704 (u. 2)	
30	ALLEN SCREW M8x20 0/000.460.4724 (u. 4)	
31	HEX BOLT M8x30 0/000.460.4726 (u. 1)	
32	TORNILLO HEX. M8x45 0/000.460.4703 (u. 2)	
33	HEX BOLT M10x40 0/000.460.4729 (u. 2)	
34	SCREW M10x1.25x105 0/000.460.4739 (u. 1)	
35	SCREW M10x1.25x130 0/000.460.4740 (u. 1)	
36	SCREW M10x1.25x160 0/000.460.4741 (u. 1)	
37	FLAT WASHER M8 0/000.440.4705 (u. 8)	
38	NUT M6 0/000.340.4713 (u. 1)	
39	SELF-LOCKING NUT M8 0/000.340.4707 (u. 6)	
40	SELF-LOCKING NUT M10 0/000.340.4708 (u. 3)	
41	SERRATED FLANGE NUT M10x1.5 0/000.340.4703 (u. 2)	

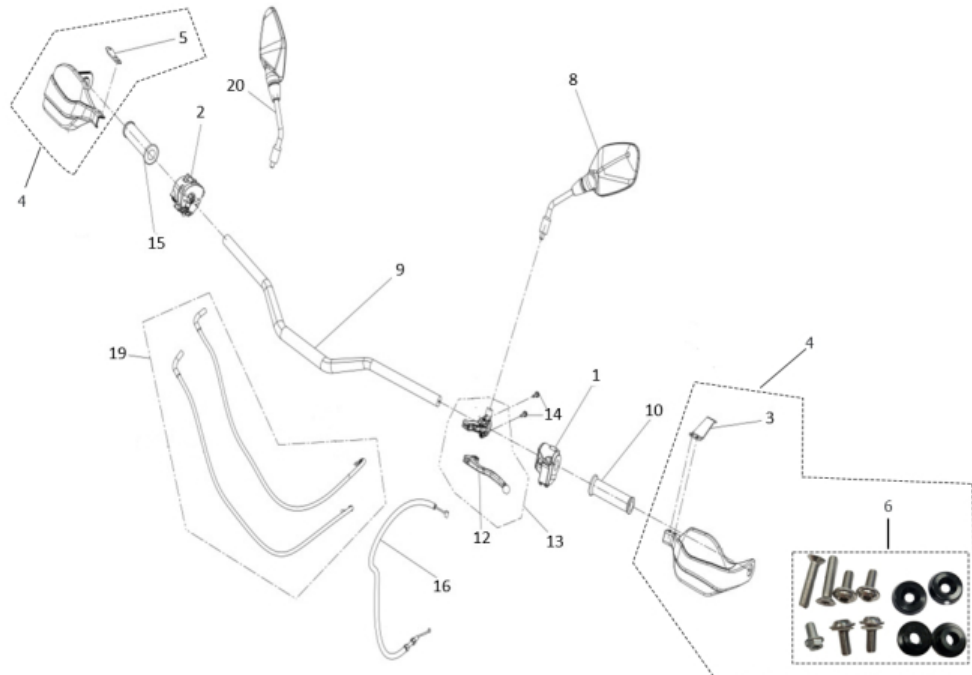
STEERING HEAD



1	UPPER TRIPLE CLAMP 0/000.660.4701 (u. 1)
2	LOWER HANDLEBAR CLAMP 0/000.350.4711 (u. 2)
3	UPPER HANDLEBAR CLAMP 0/000.350.4712 (u. 2)
4	UPPER STEERING STEM DUST COVER 0/000.200.4701 (u. 1)
5	CABLE CLIP 0/000.680.4710 (u. 1)
6	CABLE CLIP 2 0/000.680.4711 (u. 1)
7	CABLE CLIP 3 0/000.680.4712 (u. 1)
8	PLATINA INFERIOR HORQUILLA + EJE DIRECCION 0/000.660.4702 (u. 1)
9	FRONT REFLECTOR 0/000.630.4701 (u. 2)
10	FRONT REFLECTOR BRACKET 0/000.980.4704 (u. 2)
12	IGNITION SWITCH TRIM COVER 0/000.350.4713 (u. 1)
13	IGNITION SWITCH SIDE TRIM 0/000.350.4714 (u. 1)
14	UPPER STEERING BOLT 0/000.460.4785 (u. 1)
15	LOWER STEERING STEM DUST COVER 0/000.200.4702 (u. 1)
16	SCREW M6x12 0/000.460.4719 (u. 1)

17	SCREW M6x16 0/000.460.4720 (u. 2)	Obsolete
18	HEX BOLT M8x30 0/000.460.4726 (u. 7)	
19	HEX BOLT M8x35 0/000.460.4727 (u. 2)	
20	HEX BOLT M8x50 0/000.460.4728 (u. 4)	
21	ALLEN SCREW M10x1.5x35 0/000.460.4708 (u. 2)	
22	UPPER STEERING BEARING ASSEMBLY 0/K00.960.4713 (u. 1)	
23	LOWER STEERING BEARING ASSEMBLY 0/K00.960.4714 (u. 1)	

HANDLEBAR

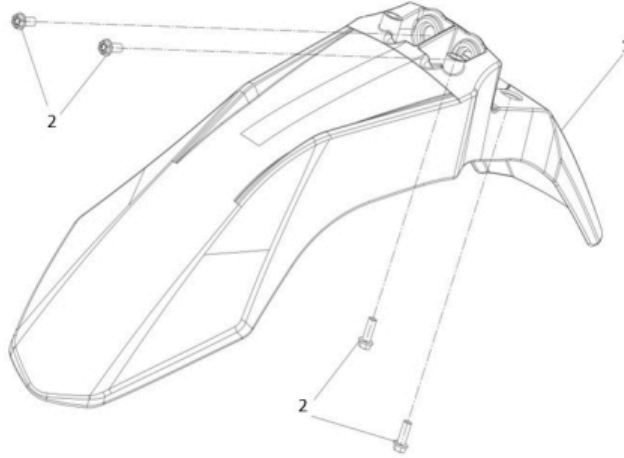


1	LEFT SWITCH 0/000.720.4702 (u. 1)
2	RIGHT SWITCH 0/000.720.4703 (u. 1)
3	HANDGUARD BRACKET LH 0/000.980.4725 (u. 1)
4	HANDGUARD SET FOR RALLY 307 0/K00.770.4701 (u. 1)
5	HANDGUARD BRACKET RH 0/000.980.4726 (u. 1)
6	HANDGUARD FASTENER KIT RALLY 307 0/K00.460.4701 (u. 1)
8	REARVIEW MIRROR LH 0/000.990.4701 (u. 1)
9	HANDLEBAR 0/000.170.4701 (u. 1)
10	RUBBER GRIP LH 0/000.530.4701 (u. 1)
13	COMPLETE CLUTCH LEVER 0/000.830.4702 (u. 1)
14	SCREW M5x24 0/000.460.4702 (u. 2)
15	THROTTLE GRIP WITH RUBBER 0/000.530.4702 (u. 1)
16	CLUTCH CABLE 0/000.550.4705 (u. 1)
19	THROTTLE CABLE SET 0/000.550.4702 (u. 1)
20	REARVIEW MIRROR RH 0/000.990.4702 (u. 1)

FRONT MUDGUARD



1	FRONT FENDER RALLY 307	0/000.050.4701	(u. 1)
2	SCREW M6x16	0/000.460.4720	(u. 4)

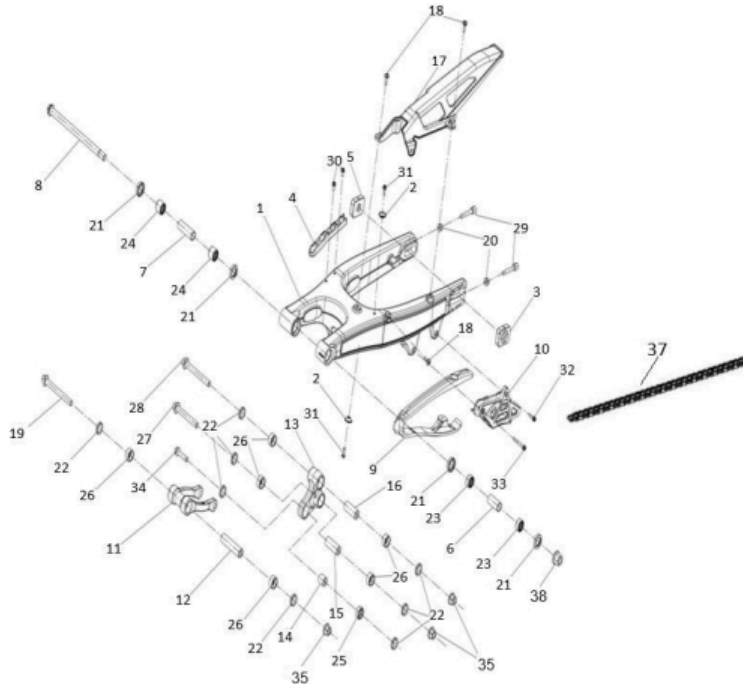


1 FRONT FENDER RALLY 307
0/000.050.4701 (u. 1)

2 SCREW M6x16
0/000.460.4720 (u. 4)

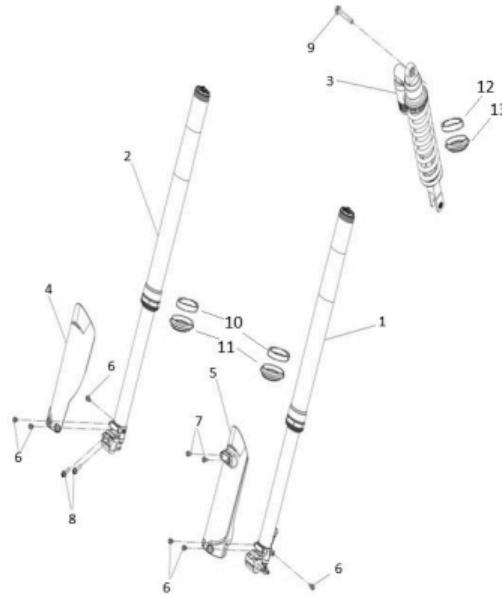
Obsolete

SWING ARM



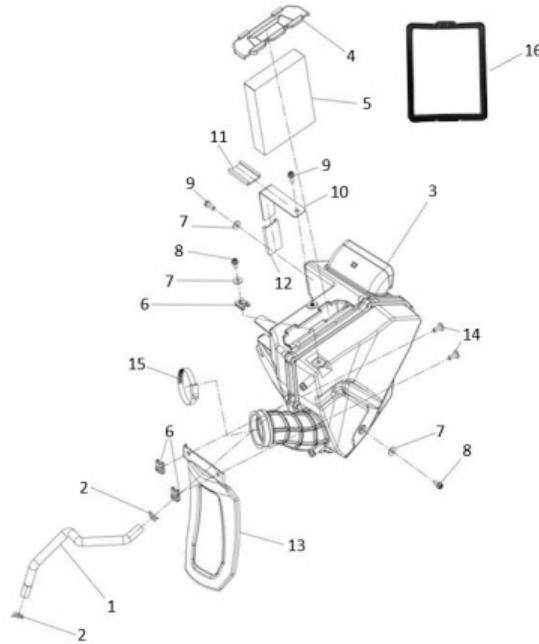
1	SWINGARM 0/000.020.4701 (u. 1)
2	LOCK WASHER M6 0/000.440.4732 (u. 2)
3	CHAIN ADJUSTER RH 0/000.380.4702 (u. 1)
4	CABLE GUIDE 0/000.630.4703 (u. 1)
5	CHAIN ADJUSTER LH 0/000.380.4703 (u. 1)
6	SWINGARM SPACER LH 0/000.480.4725 (u. 1)
7	SWINGARM SPACER RH 0/000.480.4726 (u. 1)
8	SWINGARM AXLE 0/000.190.4707 (u. 1)
9	CHAIN SLIDER 0/000.360.4707 (u. 1)
10	CHAIN GUIDE 0/000.710.4703 (u. 1)
11	SWINGARM LINKAGE ROD 0/000.770.4710 (u. 1)
12	SWINGARM LINKAGE SPACER 0/000.480.4727 (u. 1)
13	SWINGARM ROCKER LEVER 0/000.980.4720 (u. 1)
14	ROCKER LEVER SPACER 1 0/000.480.4728 (u. 1)
15	ROCKER LEVER SPACER 2 0/000.480.4729 (u. 1)

16	ROCKER LEVER SPACER 3 0/000.480.4730 (u. 1)	
17	CHAIN GUARD 0/000.220.4715 (u. 1)	
18	SCREW M6x16 0/000.460.4781 (u. 3)	
19	SCREW M12x115 0/000.460.4784 (u. 1)	
20	NUT M8 0/000.340.4723 (u. 2)	
21	OIL SEAL 0/000.890.4708 (u. 4)	
22	LINKAGE OIL SEAL 0/000.890.4710 (u. 8)	
23	SWINGARM BEARING 0/000.960.4717 (u. 2)	
24	SWINGARM BEARING RH 0/000.960.4718 (u. 2)	
25	ROCKER LEVER BEARING 1 0/000.960.4719 (u. 1)	
26	ROCKER LEVER BEARING 2 0/000.960.4720 (u. 6)	
27	SCREW 12x1.25x90 0/000.460.4737 (u. 1)	
28	SCREW M12x1.25x105 0/000.460.4738 (u. 1)	
29	SCREW M8x50 0/000.460.4713 (u. 2)	
30	SCREW M6x12 0/000.460.4719 (u. 2)	
31	SCREW M6x16 0/000.460.4720 (u. 2)	Obsolete
32	SCREW M6x20 0/000.460.4721 (u. 1)	
	HEXAGONAL FLANGE SCREW DIN 6921 TX30 M6x20 GRADE 10.9 GEOMET 0/000.460.9181 (u. 1)	
33	SCREW M6x45 0/000.460.4723 (u. 1)	
34	HEX BOLT M10x40 0/000.460.4729 (u. 1)	
35	SELF-LOCKING NUT M12x1.25 0/000.340.4715 (u. 3)	
37	CHAIN 0/001.050.4702 (u. 1)	
38	SELF-LOCKING NUT M14 0/000.340.4716 (u. 1)	

SUSPENSION


1	FORK TUBE LH 0/000.130.4702 (u. 1)
2	FORK TUBE RH 0/000.130.4701 (u. 1)
3	REAR SHOCK ABSORBER 0/000.180.4701 (u. 1)
4	FORK GUARD RH 0/000.220.4717 (u. 1)
5	FORK GUARD LH 0/000.220.4719 (u. 1)
6	SCREW M6x12 0/000.460.4742 (u. 6)
7	PLASTIC THREAD SCREW M6x16 0/000.460.4735 (u. 2)
8	HEX BOLT M8x25 0/000.460.4725 (u. 2)
9	SCREW M10x1.25x65 0/000.460.4736 (u. 1)
10	OIL SEAL FOR FRONT SHOCK ABSORBER 0/000.890.4711 (u. 2)
11	UPPER FORK DUST SEAL 0/000.200.4703 (u. 2)
12	OIL SEAL FOR REAR SHOCK ABSORBER 0/000.890.4712 (u. 1)
13	REAR SHOCK ABSORBER DUST SEAL 0/000.200.4704 (u. 1)

INTAKE SYSTEM

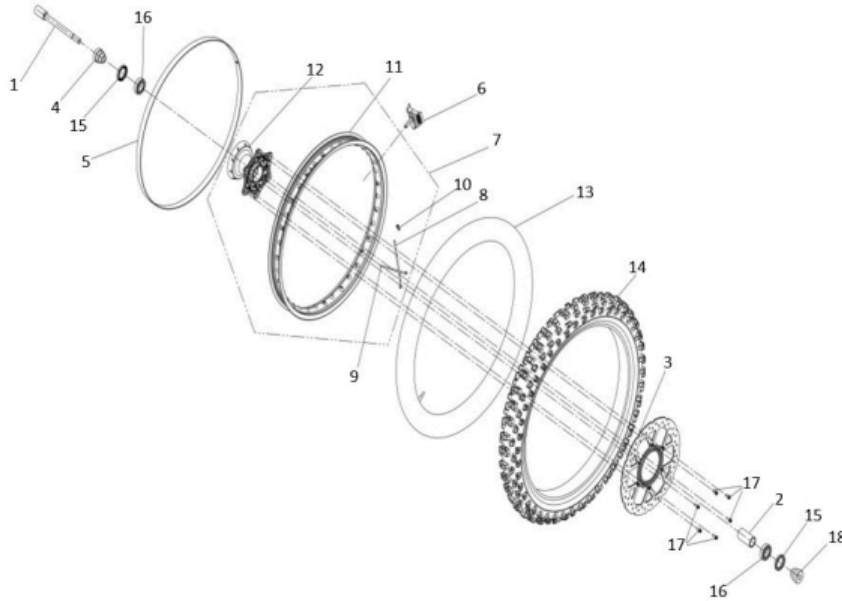


1	AIR HOSE 2 0/000.290.4723 (u. 1)	
2	CLAMP Ø14 0/000.680.4702 (u. 2)	
3	AIR FILTER ASSY 0/000.910.4700 (u. 1)	
4	AIR FILTER COVER 0/000.350.4709 (u. 1)	
5	AIR FILTER 0/001.070.4703 (u. 1)	
6	QUICK NUT M6 0/000.340.4712 (u. 3)	
7	FLAT WASHER M6 0/000.440.4706 (u. 3)	
8	SCREW M6x12 0/000.460.4719 (u. 2)	
9	SCREW M6x16 0/000.460.4720 (u. 2)	Obsolete
10	BATTERY PLATE 0/000.220.4714 (u. 1)	
11	BATTERY PLATE RUBBER PROTECTOR 0/000.220.4712 (u. 1)	
12	BATTERY PLATE RUBBER PROTECTOR 2 0/000.220.4713 (u. 1)	
13	REAR MUDGUARD 0/000.220.4716 (u. 1)	
14	TORX SCREW WITH WASHER M6x16 0/000.460.4718 (u. 2)	
15	CLAMP 50-70 0/000.680.4718 (u. 1)	

16

RUBBER FRAME FOR AIR FILTER ELEMENT
0/000.360.4720 (u. 1)

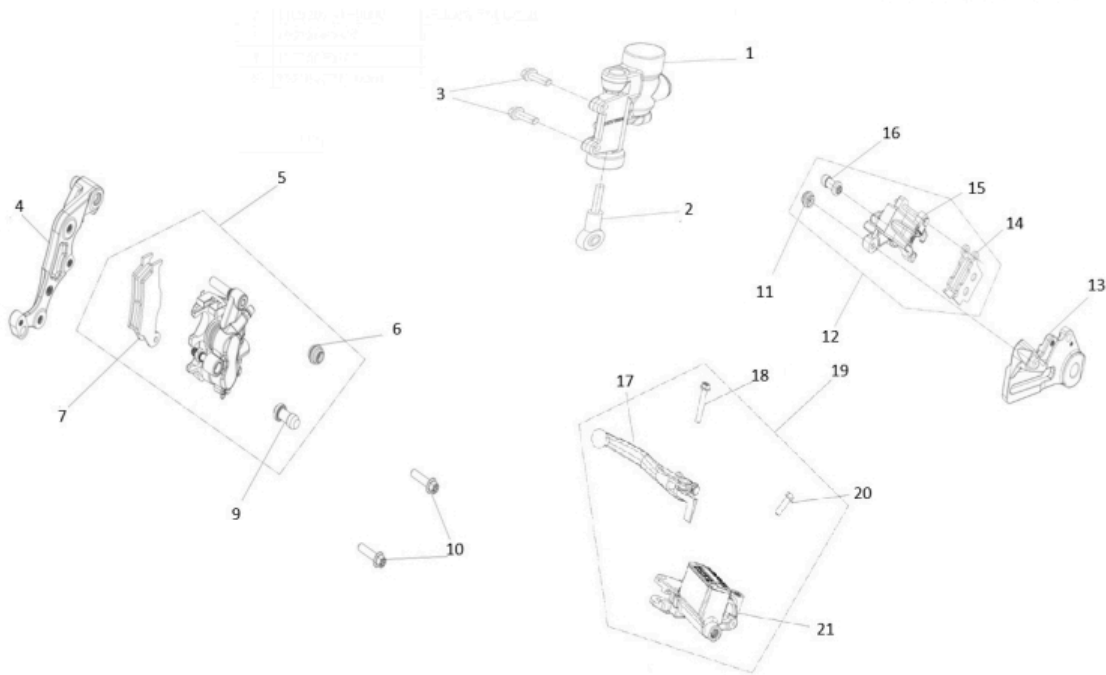
RUEDA DELANTERA



1	FRONT WHEEL AXLE 0/000.190.4705 (u. 1)
2	FRONT WHEEL SPACER 0/000.480.4715 (u. 1)
3	FRONT BRAKE DISC 0/001.090.4701 (u. 1)
4	FRONT WHEEL SIDE SPACER 0/000.480.4716 (u. 1)
5	FRONT WHEEL TYRE PROTECTOR 0/000.220.4708 (u. 1)
6	FRONT WHEEL TUBE HOLDER 0/000.220.4709 (u. 1)
7	COMPLETE FRONT WHEEL 0/000.230.4701 (u. 1)
8	FRONT WHEEL OUTER SPOKE 0/000.540.4701 (u. 18)
9	FRONT WHEEL INNER SPOKE 0/000.540.4702 (u. 18)
10	FRONT WHEEL SPOKE NIPPLE 0/000.340.4721 (u. 36)
11	FRONT WHEEL RIM 0/000.230.4702 (u. 1)
12	FRONT WHEEL HUB 0/000.070.4701 (u. 1)
13	FRONT WHEEL INNER TUBE 0/000.520.4701 (u. 1)
14	FRONT TYRE 90/90-21 0/000.510.4701 (u. 1)
15	WHEEL OIL SEAL 0/000.890.4709 (u. 2)

16	WHEEL BEARING 0/000.960.4715 (u. 2)	
17	SCREW M6x16 0/000.460.4720 (u. 6)	Obsolete
18	BUSH FOR FRONT WHEEL RIGHT SIDE 0/000.480.4736 (u. 1)	

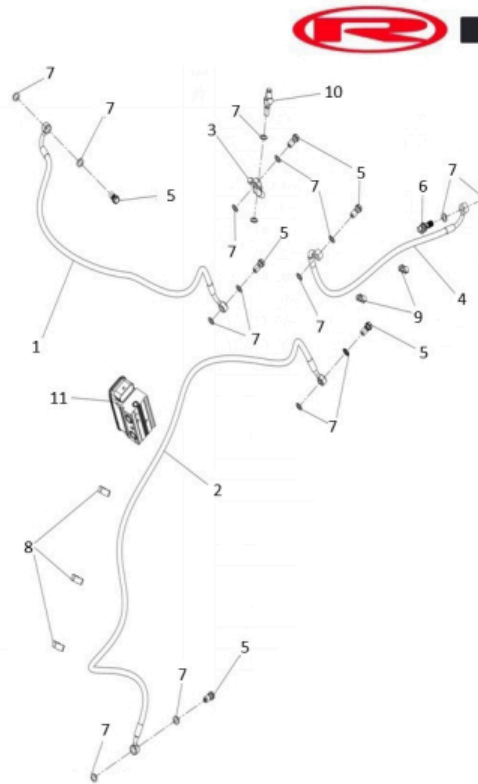
BRAKE CALIPERS / FRONT AND REAR BRAKE PUMP



1	REAR BRAKE MASTER CYLINDER 0/000.860.4709 (u. 1)	
2	BRAKE ROD BALL JOINT 0/000.460.4780 (u. 1)	
3	SCREW M6x16 0/000.460.4720 (u. 2)	Obsolete
4	FRONT CALIPER BRACKET 0/000.980.4706 (u. 1)	
5	FRONT CALIPER ASSY 0/000.860.4705 (u. 1)	
6	DUST CAP 0/000.410.4707 (u. 1)	
7	FRONT BRAKE PADS (1KIT) 0/000.930.4701 (u. 1)	
9	LOWER DUST CAP 0/000.410.4708 (u. 1)	
10	HEX BOLT M8x30 0/000.460.4726 (u. 2)	
11	DUST CAP 0/000.410.4709 (u. 1)	
12	REAR CALIPER ASSY 0/000.860.4707 (u. 1)	
13	REAR CALIPER BRACKET 0/000.980.4707 (u. 1)	
14	REAR BRAKE PADS (1KIT) 0/000.930.4702 (u. 1)	
15	REAR CALIPER 0/000.860.4708 (u. 1)	
16	LOWER DUST CAP 0/000.410.4710 (u. 1)	

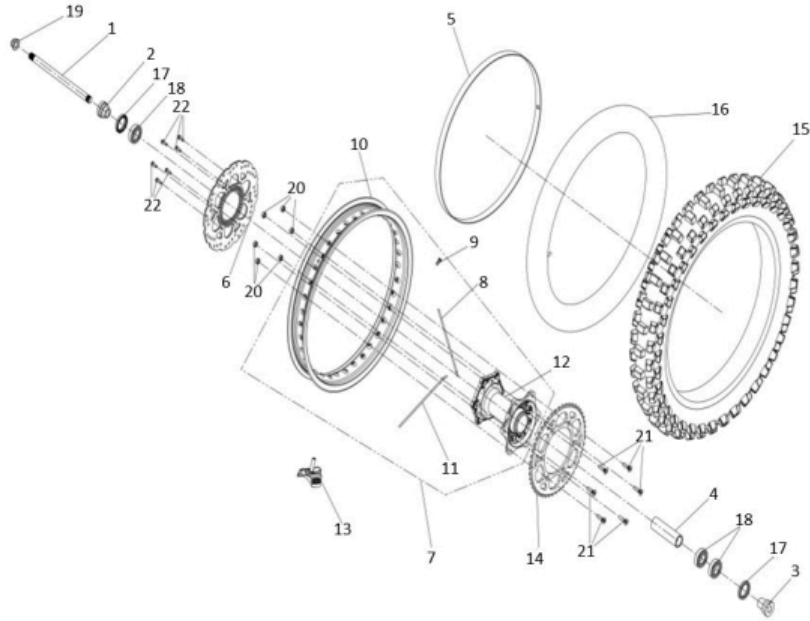
17	FRONT BRAKE LEVER 0/000.830.4701 (u. 1)
18	SCREW M6x35 0/000.460.4722 (u. 1)
19	FRONT BRAKE PUMP ASSY 0/000.860.4703 (u. 1)
20	SCREW M6x20 0/000.460.4721 (u. 1)
	HEXAGONAL FLANGE SCREW DIN 6921 TX30 M6x20 GRADE 10.9 GEOMET 0/000.460.9181 (u. 1)
21	FRONT BRAKE PUMP 0/000.860.4704 (u. 1)

ABS ASSY.



1	FRONT PUMP TO ABS HOSE 0/000.290.4715 (u. 1)
2	ABS TO FRONT CALIPER HOSE 0/000.290.4716 (u. 1)
3	REAR BRAKE FITTING 0/000.460.4786 (u. 1)
4	ABS TO REAR CALIPER HOSE 0/000.290.4717 (u. 1)
5	BRAKE SYSTEM SCREW 0/000.460.4778 (u. 6)
6	BLEED SCREW 0/000.460.4779 (u. 1)
7	BRAKE COPPER WASHER 0/000.440.4731 (u. 16)
8	BRAKE CABLE CLIP 0/000.680.4709 (u. 3)
9	BRAKE CABLE CLIP 2 0/000.680.4708 (u. 2)
10	REAR BRAKE SWITCH 0/000.720.4701 (u. 1)
11	ABS MODULE 0/000.820.4701 (u. 1)

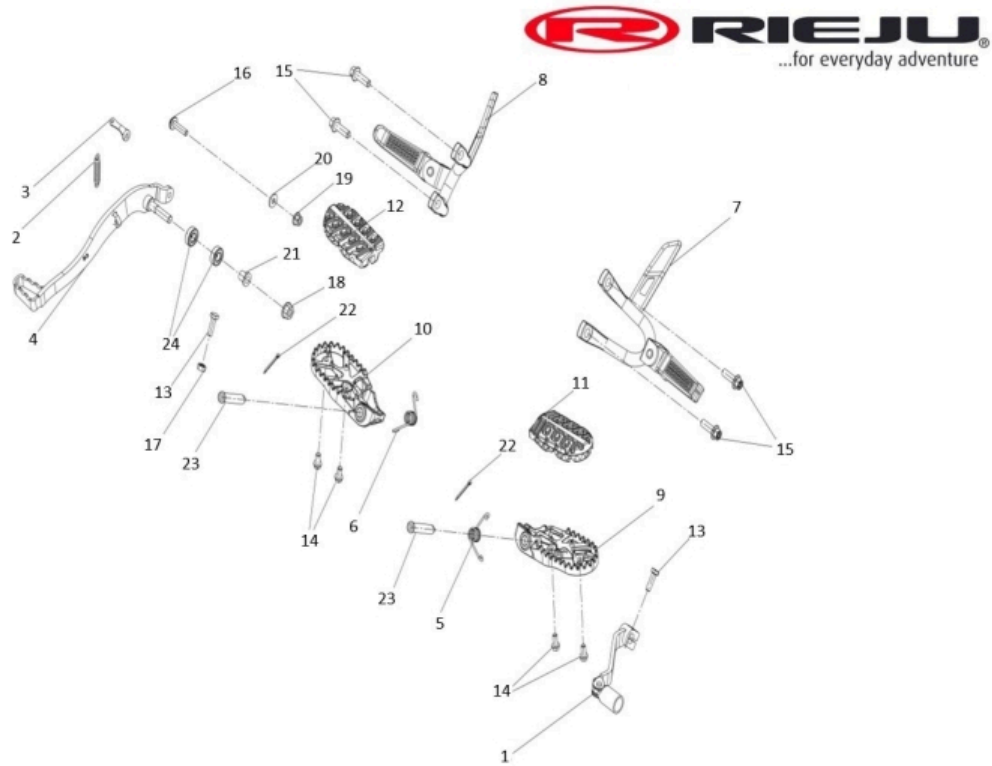
REAR WHEEL



1	REAR WHEEL AXLE 0/000.190.4706 (u. 1)
2	REAR WHEEL SPACER RH 0/000.480.4717 (u. 1)
3	REAR WHEEL SPACER LH 0/000.480.4718 (u. 1)
4	CENTRAL REAR WHEEL SPACER 0/000.480.4719 (u. 1)
5	FRONT WHEEL TYRE PROTECTOR 0/000.220.4708 (u. 1)
6	REAR BRAKE DISC 0/001.090.4702 (u. 1)
7	COMPLETE REAR WHEEL 0/000.230.4703 (u. 1)
8	REAR WHEEL OUTER SPOKE 0/000.540.4703 (u. 18)
9	REAR WHEEL SPOKE NIPPLE 0/000.340.4722 (u. 36)
10	REAR WHEEL RIM 0/000.230.4704 (u. 1)
11	REAR WHEEL INNER SPOKE 0/000.540.4704 (u. 18)
12	REAR WHEEL HUB 0/000.070.4702 (u. 1)
13	REAR TUBE LOCK 0/000.220.4711 (u. 1)
14	REAR SPROCKET Z46 0/000.500.4702 (u. 1)
15	REAR TYRE 120/80-18 0/000.510.4702 (u. 1)

16	REAR WHEEL INNER TUBE 0/000.520.4702 (u. 1)
17	WHEEL OIL SEAL 0/000.890.4709 (u. 2)
18	WHEEL BEARING 0/000.960.4715 (u. 3)
19	SELF-LOCKING NUT M16 0/000.340.4717 (u. 1)
20	M8 NUT DIN 6926 GRADE 8 ZINC/WHITE 0/000.340.0180 (u. 6)
	NUT M8 0/000.340.4711 (u. 6)
21	TORNILLO HEX CONICO M8x27 0/000.460.4706 (u. 6)
22	SCREW M6x20 0/000.460.4721 (u. 6)
	HEXAGONAL FLANGE SCREW DIN 6921 TX30 M6x20 GRADE 10.9 GEOMET 0/000.460.9181 (u. 6)

FOOTREST - LEVERS



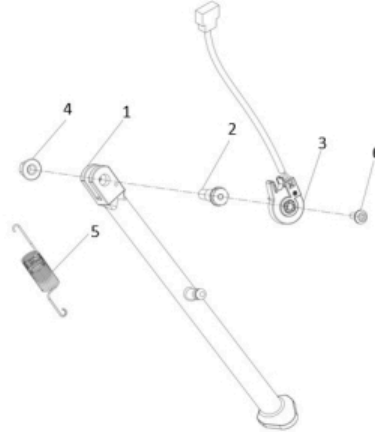
1	GEAR SHIFT LEVER 0/005.430.4702 (u. 1)	
2	BRAKE PEDAL RETURN SPRING 0/000.470.4711 (u. 1)	
3	BRAKE PEDAL RETURN BRACKET 0/000.980.4705 (u. 1)	
4	BRAKE PEDAL 0/000.730.4701 (u. 1)	
5	FOOTREST SPRING RH 0/000.470.4712 (u. 1)	
6	FOOTREST SPRING LH 0/000.470.4713 (u. 1)	Obsolete
7	PASSENGER FOOTREST BRACKET + FOOTREST LH 0/000.740.4701 (u. 1)	
8	PASSENGER FOOTREST BRACKET + FOOTREST RH 0/000.740.4702 (u. 1)	
9	FOOTREST LH 0/000.740.4703 (u. 1)	
10	FOOTREST RH 0/000.740.4704 (u. 1)	
11	FOOTREST RUBBER LH 0/000.360.4708 (u. 1)	
12	FOOTREST RUBBER RH 0/000.360.4709 (u. 1)	
13	SCREW M6x20 0/000.460.4707 (u. 2)	
14	SCREW M6x12 0/000.460.4719 (u. 4)	
15	HEX BOLT M8x25 0/000.460.4725 (u. 4)	

16	TONILLO ALLEN M6x25 0/000.460.4716 (u. 4)
17	NUT M6 0/000.340.4701 (u. 1)
18	NUT M8 0/000.340.4706 (u. 1)
19	NUT M6 0/000.340.4710 (u. 1)
20	WASHER Ø6xØ15 0/000.440.4707 (u. 1)
21	BUSHING BRAKE PEDAL 0/000.480.4705 (u. 1)
22	FOOTREST AXLE LOCK PIN 0/000.240.4701 (u. 2)
23	FOOTREST AXLE 0/000.190.4701 (u. 2)
24	BRAKE PEDAL BEARING 0/000.960.4716 (u. 2)

SIDE STAND

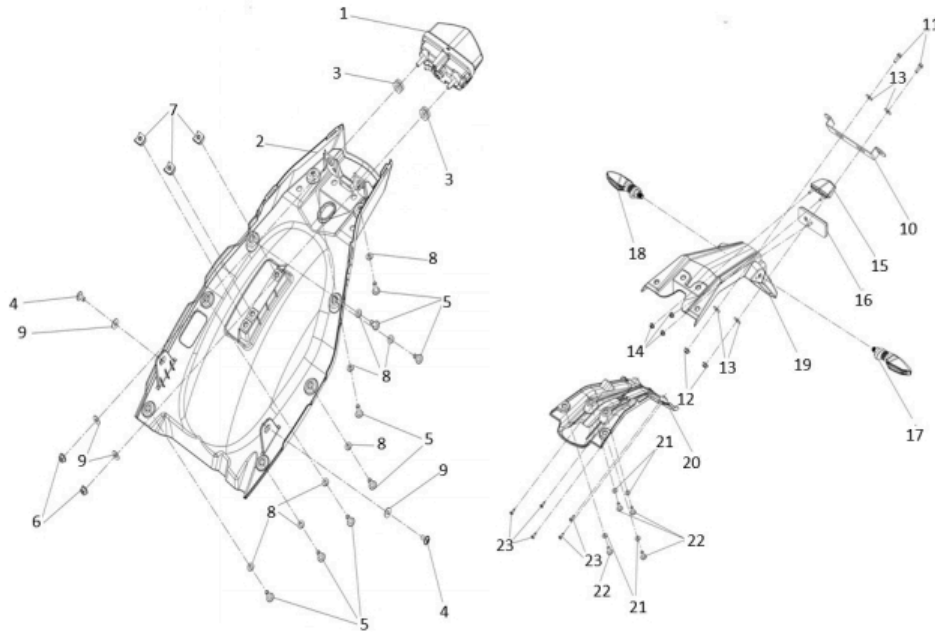


1	0/000.210.4701	0/000.210.4701	0/000.210.4701
2	0/000.460.4783	0/000.460.4783	0/000.460.4783
3	0/001.010.4706	0/001.010.4706	0/001.010.4706
4	0/000.340.4714	0/000.340.4714	0/000.340.4714
5	0/000.470.4714	0/000.470.4714	0/000.470.4714
6	0/000.460.4715	0/000.460.4715	0/000.460.4715



1	SIDE STAND 0/000.210.4701 (u. 1)
2	SIDE STAND BOLT 0/000.460.4783 (u. 1)
3	SIDE STAND SENSOR 0/001.010.4706 (u. 1)
4	NUT M10x1.25 0/000.340.4714 (u. 1)
5	SIDE STAND SPRING 0/000.470.4714 (u. 1)
6	SIDE STAND SENSOR BOLT 0/000.460.4715 (u. 1)

REAR MUDGUARD - LICENSE PLATE LIGHT - REAR TURN SIGNAL ASSY.

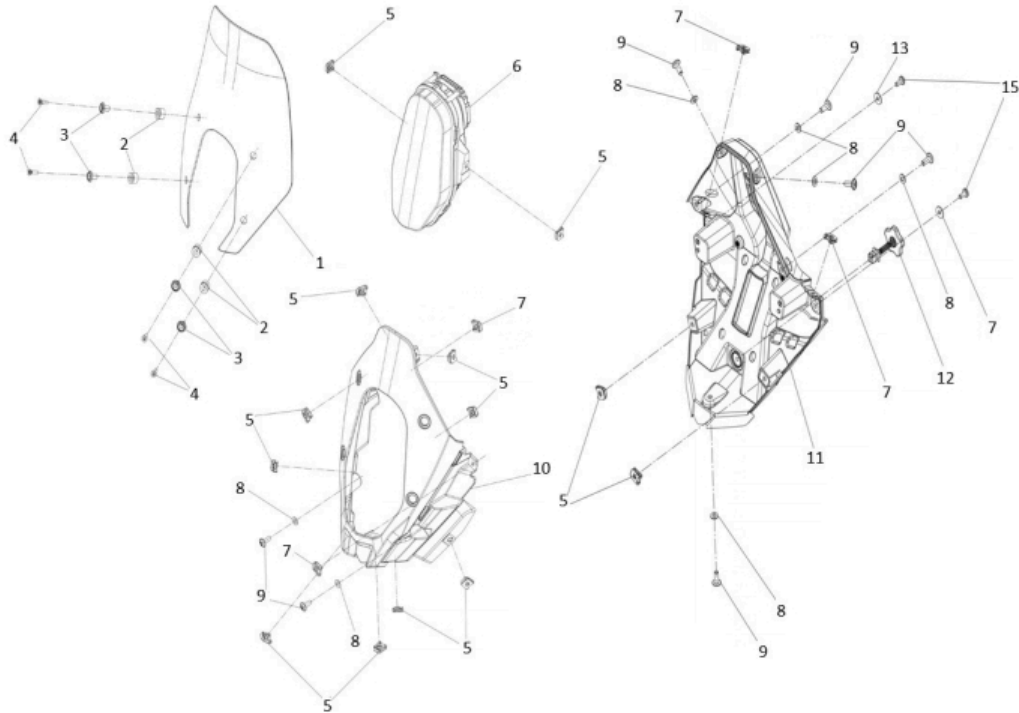


1	REAR LIGHT 0/000.150.4701 (u. 1)
2	REAR INNER FENDER 0/000.570.4702 (u. 1)
3	REAR LIGHT SILENTBLOCK 0/000.360.4718 (u. 2)
4	SCREW ISO 7380 Torx T-30 WITH WASHER M6x12 STAINLESS STEEL 0/000.460.0044 (u. 2)
	BOLT WITH WASHER M6x12 0/000.460.4717 (u. 2)
5	TORX SCREW WITH WASHER M6x16 0/000.460.4718 (u. 8)
6	NUT M6 0/000.340.4702 (u. 2)
7	QUICK NUT M6 0/000.340.4718 (u. 3)
8	NYLON WASHER M6 0/000.440.4709 (u. 8)
9	FLAT WASHER M6 0/000.440.4706 (u. 4)
10	LICENSE PLATE BRACKET 0/000.980.4708 (u. 1)
11	SCREW M6x16 0/000.460.4720 (u. 2)
12	M6 NUT WITH TOOTHED WASHER 0/000.340.4705 (u. 2)
13	WASHER M6 0/000.440.4704 (u. 4)
14	NUT M6 0/000.340.4704 (u. 3)

Obsolete

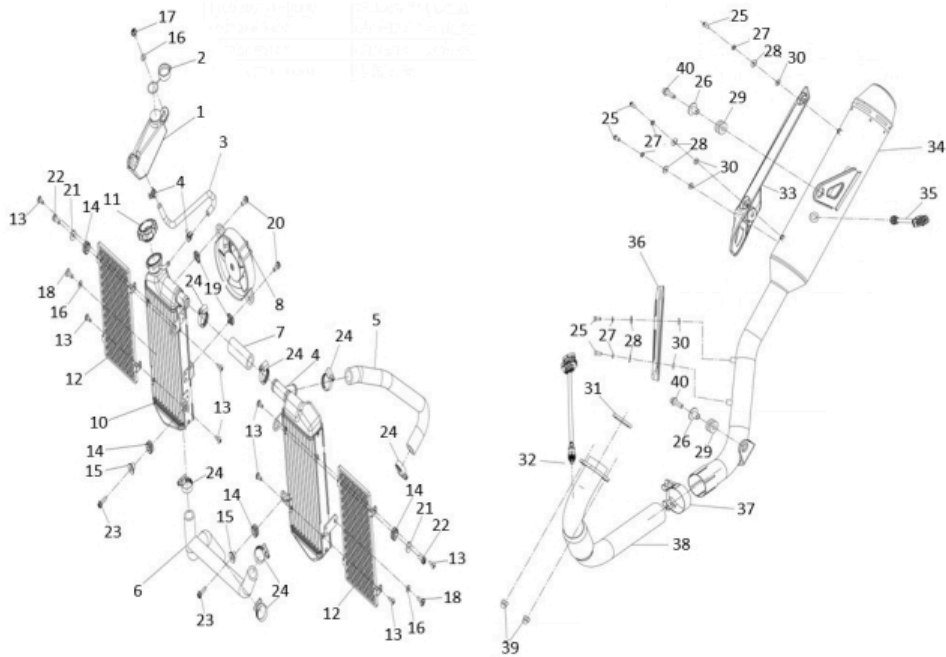
15	LICENSE PLATE LIGHT 0/000.150.4703 (u. 1)
16	REAR REFLECTOR 0/000.630.4702 (u. 1)
17	REAR LH INDICATOR 0/000.150.4706 (u. 1)
18	REAR RH INDICATOR 0/000.150.4707 (u. 1)
19	REAR FENDER LICENSE PLATE HOLDER 0/000.060.4701 (u. 1)
20	REAR INNER FENDER 0/000.060.4702 (u. 1)
21	NYLON WASHER M6 0/000.440.4709 (u. 4)
22	TORX SCREW WITH WASHER M6x16 0/000.460.4718 (u. 4)
23	PLASTIC THREAD SCREW 4.2x13 0/000.460.4733 (u. 5)

FRONT HEADLIGHT



1	WINDSHIELD SCREEN 0/000.570.4706 (u. 1)
2	WINDSHIELD SCREEN SILENTBLOCK 0/000.360.4714 (u. 4)
3	WINDSHIELD SCREEN BUSHING 0/000.480.4708 (u. 4)
4	TORNILLO M6x26 0/000.460.4705 (u. 4)
5	QUICK NUT M6 0/000.340.4718 (u. 13)
6	FRONT HEADLIGHT 0/000.150.4702 (u. 1)
7	QUICK NUT M5 0/000.340.4709 (u. 4)
8	NYLON WASHER M6 0/000.440.4709 (u. 7)
9	TORX SCREW WITH WASHER M6x16 0/000.460.4718 (u. 7)
10	FRONT HEADLIGHT BRACKET 0/000.620.4702 (u. 1)
11	INNER FRONT HEADLIGHT BRACKET 0/000.620.4701 (u. 1)
12	HEADLIGHT ADJUSTMENT SCREW 0/000.460.4782 (u. 1)
13	WASHER M5 0/000.440.4701 (u. 2)
15	TORNILLO TORX. M5x12 0/000.460.4714 (u. 2)

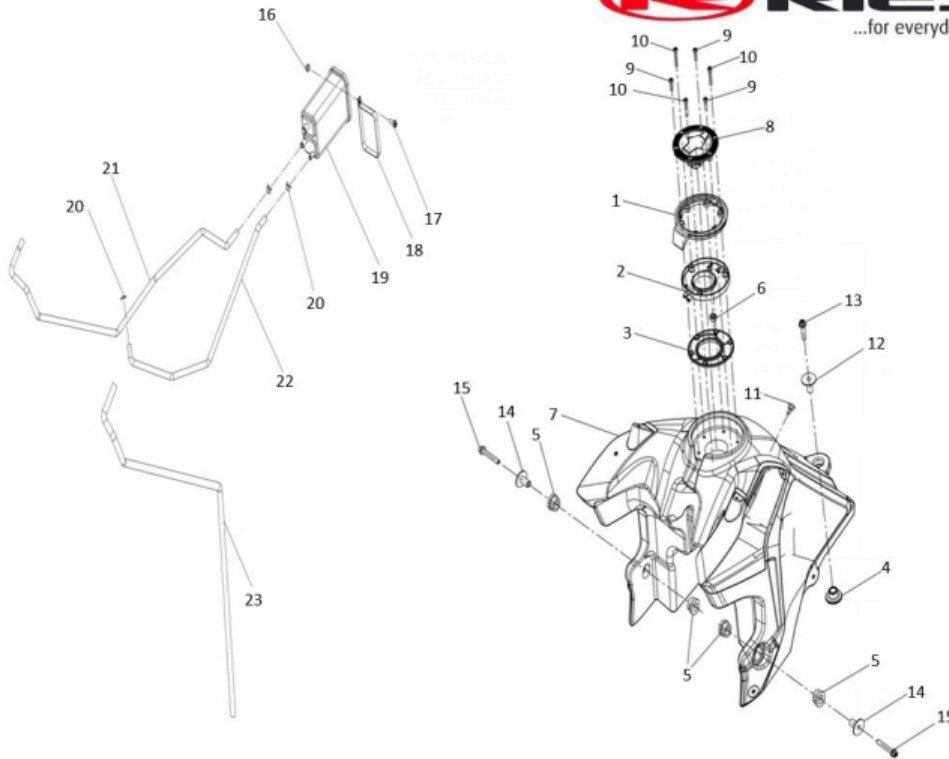
COOLING SYSTEM - EXHAUST



1	COOLANT RESERVOIR 0/000.030.4701 (u. 1)
2	EXPANSION TANK CAP 0/000.410.4705 (u. 1)
3	RESERVOIR TO RADIATOR HOSE 0/000.290.4707 (u. 1)
4	RUBBER HOSE CLAMP 0/000.680.4713 (u. 2)
5	RADIATOR HOSE 1 0/000.290.4704 (u. 1)
6	RADIATOR HOSE 2 0/000.290.4705 (u. 1)
7	RADIATOR CONNECTION HOSE 0/000.290.4706 (u. 1)
8	COOLING FAN 0/005.060.4701 (u. 1)
9	LH RADIATOR 0/000.580.4701 (u. 1)
10	RH RADIATOR 0/000.580.4702 (u. 1)
11	RADIATOR CAP 0/000.410.4706 (u. 1)
12	RADIATOR GUARD 0/000.220.4718 (u. 2)
13	SCREW M5x8 0/000.460.4776 (u. 8)
14	RADIATOR SILENTBLOCK 0/000.360.4704 (u. 4)
15	BUSHING 0/000.480.4702 (u. 2)

16	NYLON WASHER M6 0/000.440.4709 (u. 3)	
17	BOLT WITH WASHER M6x12 0/000.460.4717 (u. 1)	
	SCREW ISO 7380 Torx T-30 WITH WASHER M6x12 STAINLESS STEEL 0/000.460.0044 (u. 1)	
18	TORX SCREW WITH WASHER M6x16 0/000.460.4718 (u. 2)	
19	QUICK NUT M6 0/000.340.4718 (u. 2)	
20	BOLT M6x16 0/000.460.4712 (u. 2)	
21	WASHER M6 0/000.440.4704 (u. 2)	
22	SCREW M6x16 0/000.460.4720 (u. 2)	Obsolete
23	SCREW M6x20 0/000.460.4721 (u. 2)	
	HEXAGONAL FLANGE SCREW DIN 6921 TX30 M6x20 GRADE 10.9 GEOMET 0/000.460.9181 (u. 2)	
24	ABRAZADERA Ø30 0/000.680.4717 (u. 7)	
25	HEX BOLT M6x12 0/000.460.4732 (u. 5)	
26	EXHAUST BUSHING 0/000.480.4711 (u. 2)	
27	SPRING WASHER Ø6 0/000.440.4708 (u. 5)	
28	WASHER Ø6xØ16 0/000.440.4702 (u. 5)	
29	EXHAUST SILENTBLOCK 0/000.360.4702 (u. 2)	
30	THERMAL GASKET D6XD17X3MM 0/000.360.2007 (u. 5)	
31	EXHAUST GASKET 0/000.490.4711 (u. 1)	
32	LAMBDA SENSOR 0/001.010.4701 (u. 2)	
33	MUFFLER GUARD 0/000.220.4705 (u. 1)	
34	MUFFLER 0/000.870.4700 (u. 1)	
36	EXHAUST GUARD 0/000.220.4704 (u. 1)	
37	EXHAUST CLAMP 0/000.680.4719 (u. 1)	
38	EXHAUST PIPE RALLY 307 0/000.290.4700 (u. 1)	
39	HEX BOLT M8x25 0/000.460.4725 (u. 2)	
40	HEX BOLT M8x25 0/000.460.4725 (u. 2)	

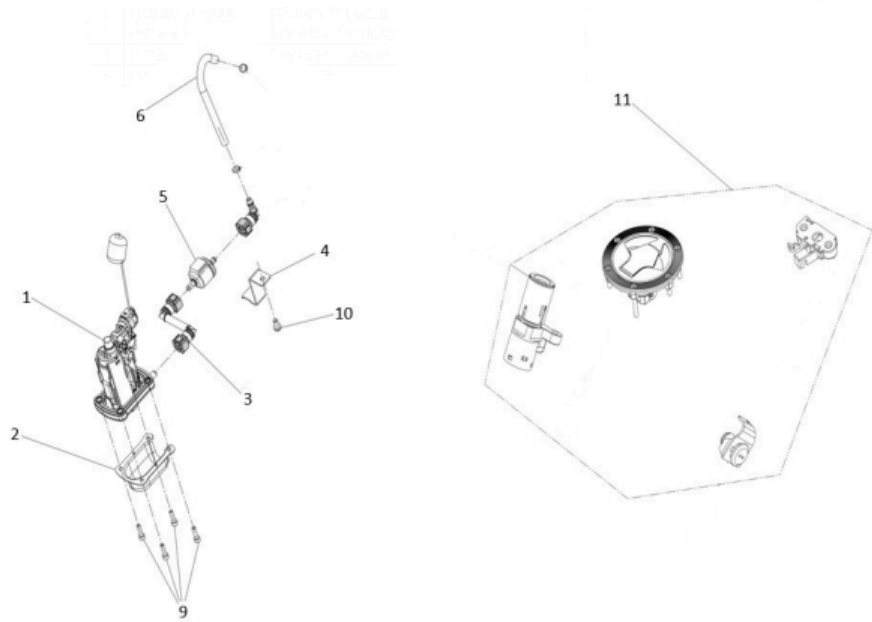
FUEL TANK



1	FUEL TANK CAP GASKET 0/000.490.4721 (u. 1)
2	FUEL TANK OVERFLOW 0/000.570.4701 (u. 1)
3	FUEL TANK LOCK BRACKET 0/000.980.4722 (u. 1)
4	FUEL TANK SILENTBLOCK 2 0/000.360.4711 (u. 1)
5	FUEL TANK SILENTBLOCK 3 0/000.360.4712 (u. 4)
6	FUEL TANK SILENTBLOCK 4 0/000.360.4713 (u. 1)
7	FUEL TANK 0/000.030.4702 (u. 1)
9	BOLT M5x20 0/000.460.4709 (u. 3)
10	BOLT M5x40 0/000.460.4710 (u. 3)
11	SCREW M6x10 0/000.460.4731 (u. 1)
12	FUEL TANK BUSHING 0/000.480.4706 (u. 1)
13	HEX BOLT M8x35 0/000.460.4727 (u. 1)
14	FUEL TANK BUSHING 2 0/000.480.4707 (u. 2)
15	HEX BOLT M8x50 0/000.460.4728 (u. 2)
16	CANISTER BRACKET NUT 0/000.340.4724 (u. 1)

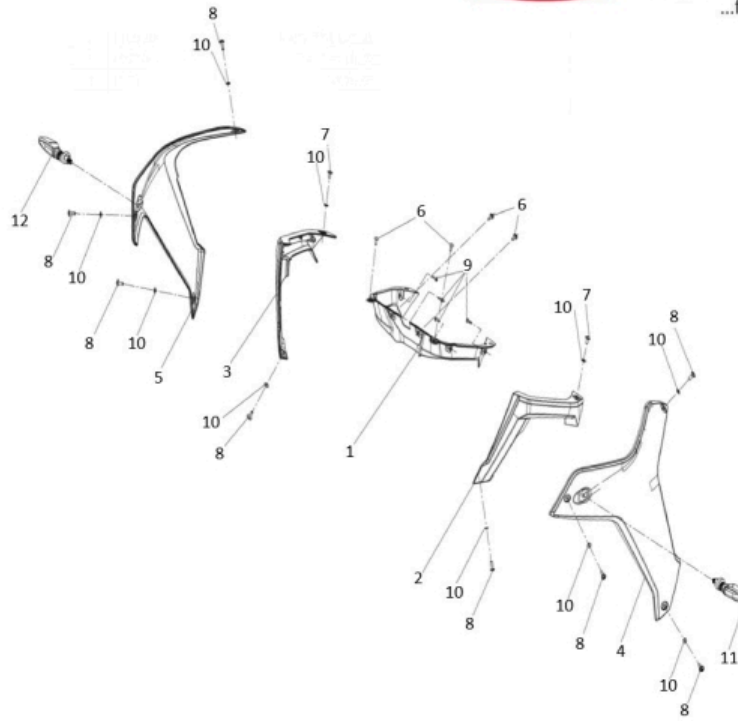
17	SCREW M6x16 0/000.460.4720 (u. 1)	Obsolete
18	SOPORTE CANISTER 0/000.980.4723 (u. 1)	
19	CANISTER VALVE 0/000.640.4704 (u. 1)	
20	CLAMP Ø10 0/000.680.4701 (u. 3)	
21	CANISTER HOSE 2 0/000.290.4722 (u. 1)	
22	CANISTER HOSE 1 0/000.290.4721 (u. 1)	
23	CANISTER HOSE 3 0/000.290.4724 (u. 1)	

FUEL PUMP ASSY. - SET OF LOCKS



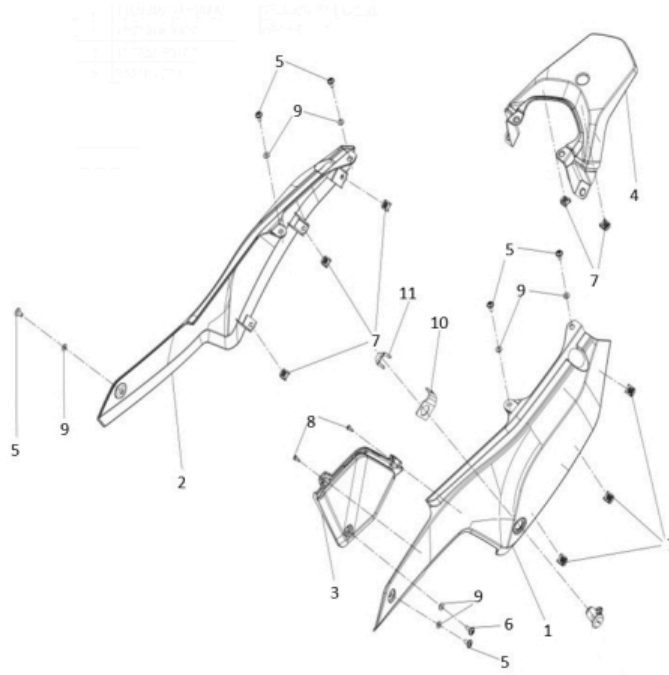
1	FUEL PUMP 0/000.860.4702 (u. 1)
2	FUEL PUMP COVER 0/000.350.4710 (u. 1)
3	HOSE FUEL PUMP TO FILTER 0/000.290.4720 (u. 1)
4	FUEL HOSE BRACKET 0/000.980.4724 (u. 1)
5	FUEL FILTER 0/001.070.4704 (u. 1)
6	FUEL HOSE 1 0/000.290.4719 (u. 1)
9	BOLT M5x20 0/000.460.4709 (u. 4)
10	SCREW M6x12 0/000.460.4719 (u. 1)
11	COMPLETE LOCK SET 0/001.060.4701 (u. 1)

FUEL TANK COVERS



1	FRONT COVER 0/000.570.4711 (u. 1)
2	FRONT LEFT SIDE TRIM 0/000.570.4707 (u. 1)
3	FRONT RIGHT SIDE TRIM 0/000.570.4708 (u. 1)
4	FRONT LEFT SIDE COVER 0/000.570.4709 (u. 1)
5	FRONT RIGHT SIDE COVER 0/000.570.4710 (u. 1)
6	TORNILLO TORX. M5x12 0/000.460.4714 (u. 4)
7	BOLT WITH WASHER M6x12 0/000.460.4717 (u. 2) SCREW ISO 7380 Torx T-30 WITH WASHER M6x12 STAINLESS STEEL 0/000.460.0044 (u. 2)
8	TORX SCREW WITH WASHER M6x16 0/000.460.4718 (u. 8)
9	PLASTIC THREAD SCREW 4.2x16 0/000.460.4734 (u. 4)
10	NYLON WASHER M6 0/000.440.4709 (u. 10)
11	FRONT LEFT INDICATOR 0/000.150.4704 (u. 1)
12	FRONT RIGHT INDICATOR 0/000.150.4705 (u. 1)

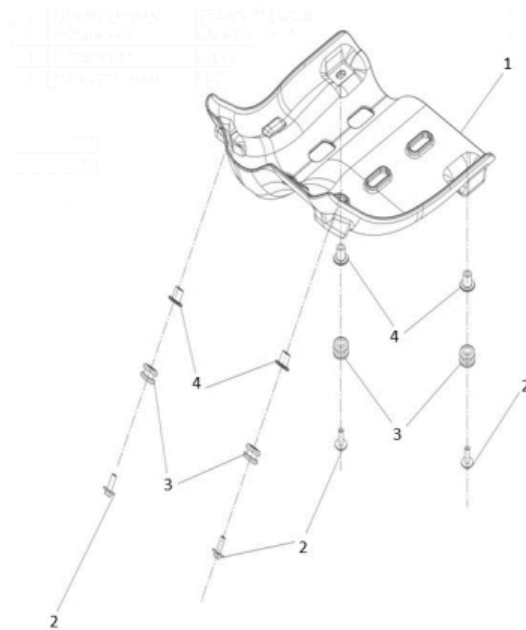
BODY SIDE COVER COMPONENTS



1	REAR LEFT SIDE COVER 0/000.570.4703 (u. 1)
2	REAR RIGHT SIDE COVER 0/000.570.4704 (u. 1)
3	CENTER LEFT TRIM 0/000.570.4705 (u. 1)
4	REAR UPPER FENDER 0/000.060.4703 (u. 1)
5	SCREW ISO 7380 Torx T-30 WITH WASHER M6x12 STAINLESS STEEL 0/000.460.0044 (u. 6)
	BOLT WITH WASHER M6x12 0/000.460.4717 (u. 6)
6	TORX SCREW WITH WASHER M6x16 0/000.460.4718 (u. 1)
7	QUICK NUT M6 0/000.340.4718 (u. 8)
8	PLASTIC THREAD SCREW 4.2x13 0/000.460.4733 (u. 2)
9	NYLON WASHER M6 0/000.440.4709 (u. 7)
10	SEAT LOCK BRACKET 0/000.980.4727 (u. 1)
11	SEAT LOCK SPRING PLATE 0/000.470.4715 (u. 1)

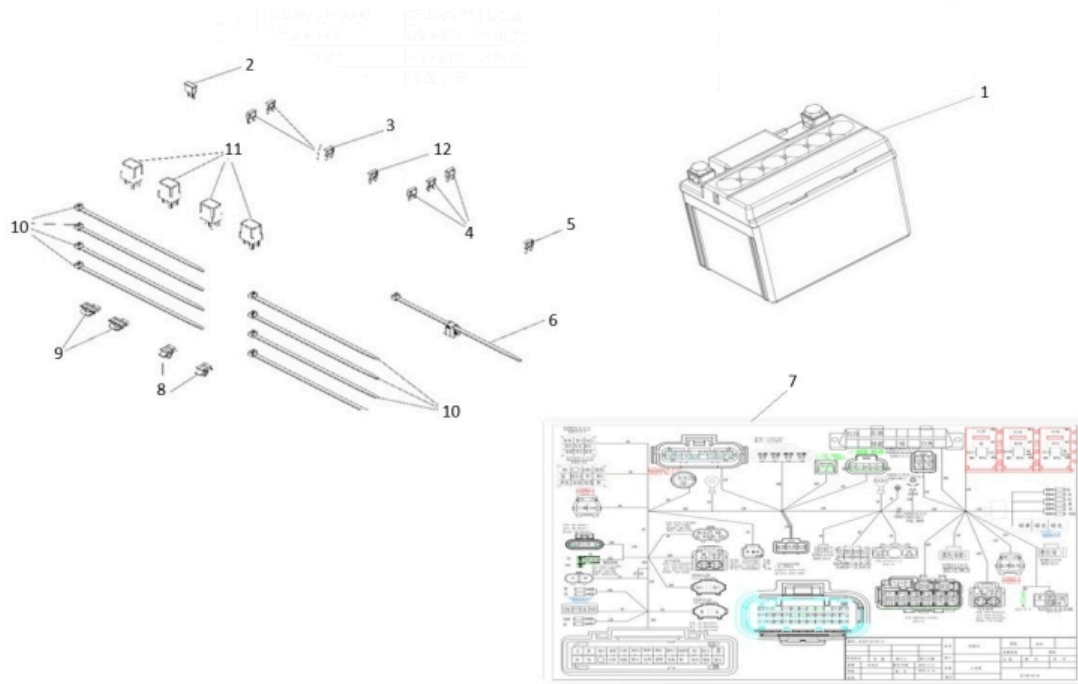
Obsolete

ENGINE PROTECTOR



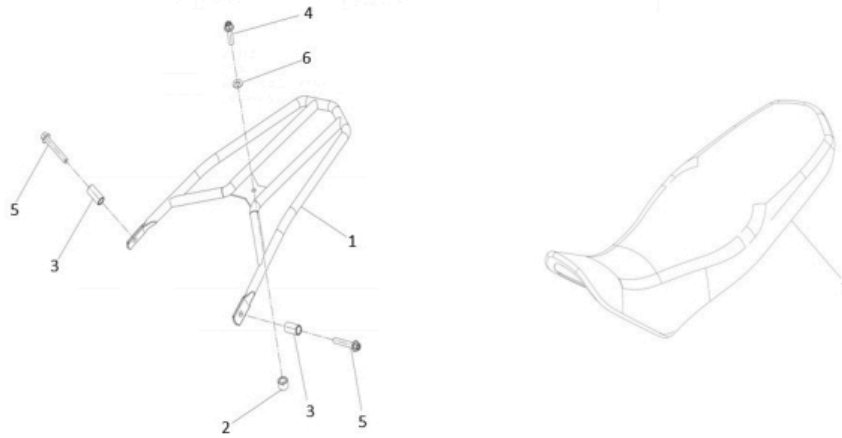
1	ENGINE SKID PLATE 0/000.220.4720 (u. 1)
2	SCREW M6x20 0/000.460.4730 (u. 4)
3	HEXAGONAL FLANGE SCREW DIN 6921 TX30 M6x20 GRADE 10.9 GEOMET 0/000.460.9181 (u. 4)
4	ENGINE SKID PLATE BUSHING 0/000.480.4703 (u. 4)

BATTERY - ELECTRICAL WIRING



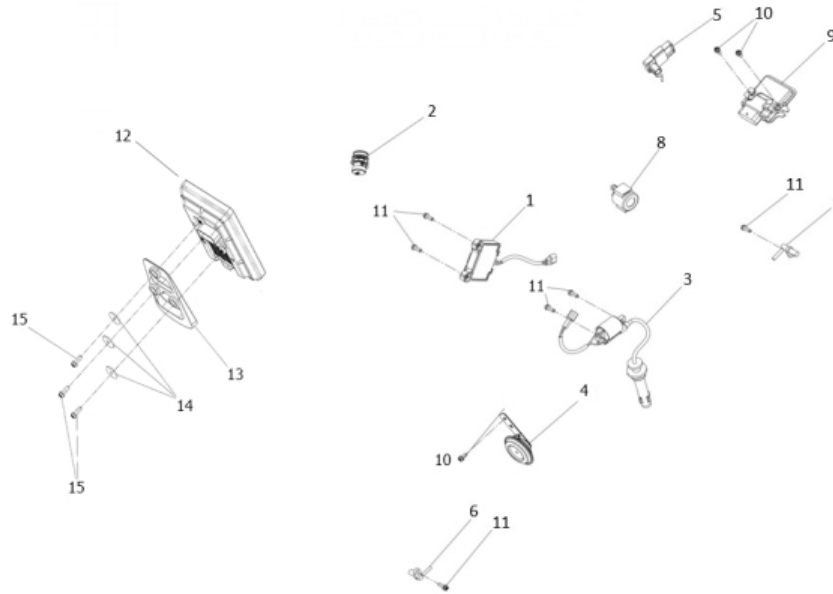
1	BATTERY 0/000.900.4701 (u. 1)
2	FUSE DIODE 0/001.200.4703 (u. 1)
3	25A FUSE 0/000.910.4704 (u. 1)
4	15A FUSE 0/000.910.4702 (u. 3)
5	30A FUSE 0/000.910.4705 (u. 1) 10A FUSE 0/000.910.4701 (u. 1)
6	NYLON CLAMP 0/000.680.4720 (u. 1)
7	MAIN WIRING HARNESS 0/000.160.4701 (u. 1) - 0/001.010.4709 included
8	SPEED SENSOR CABLE CLIP 0/000.680.4705 (u. 1)
9	LAMBDA SENSOR SEAL CLIP 0/000.680.4704 (u. 1)
10	NYLON CLAMP 0/000.680.4714 (u. 8)
11	RELAY 0/001.200.4704 (u. 4)
12	20A FUSE 0/000.910.4703 (u. 1)
13	TEMPERATURE SENSOR 0/001.010.4709 (u. 1)

SEAT - REAR HANDLE



1	GRAB HANDLE 0/000.980.4721 (u. 1)
2	GRAB HANDLE SPACER 0/000.480.4731 (u. 1)
3	LATERAL GRAB HANDLE SPACER 0/000.480.4732 (u. 2)
4	HEX BOLT M8x30 0/000.460.4726 (u. 1)
5	HEX BOLT M8x50 0/000.460.4728 (u. 2)
6	FLAT WASHER M8 0/000.440.4705 (u. 1)
7	SEAT 0/000.040.4701 (u. 1)

ELECTRICAL COMPONENTS



1	VOLTAGE REGULATOR 0/001.200.4701 (u. 1)	
2	USB CHARGING PORT 0/001.200.4702 (u. 1)	
3	IGNITION COIL 0/005.070.4705 (u. 1)	
4	HORN 0/000.420.4701 (u. 1)	
5	FLASHER RELAY 0/001.200.4705 (u. 1)	
6	FRONT WHEEL ABS SENSOR 0/001.010.4704 (u. 1)	
7	REAR WHEEL ABS SENSOR 0/001.010.4705 (u. 1)	
8	STARTER RELAY 0/001.200.4706 (u. 1)	
9	RALLY 307 ECU 0/005.705.4701 (u. 1)	
10	BOLT M6x16 0/000.460.4712 (u. 3)	
11	SCREW M6x16 0/000.460.4720 (u. 1)	Obsolete
12	DASHBOARD 0/001.000.4701 (u. 1)	
13	SCREEN ANTI-VIBRATION RUBBER 0/000.360.4717 (u. 1)	
14	FLAT WASHER M6 0/000.440.4703 (u. 3)	
15	SCREW M6x16 0/000.460.4720 (u. 3)	Obsolete

DECAL SET



1

SET OF AVENTURA RALLY 307 DECALS
0/000.390.4700 (u. 1)

SPECIAL TOOL FOR FRONT FORK

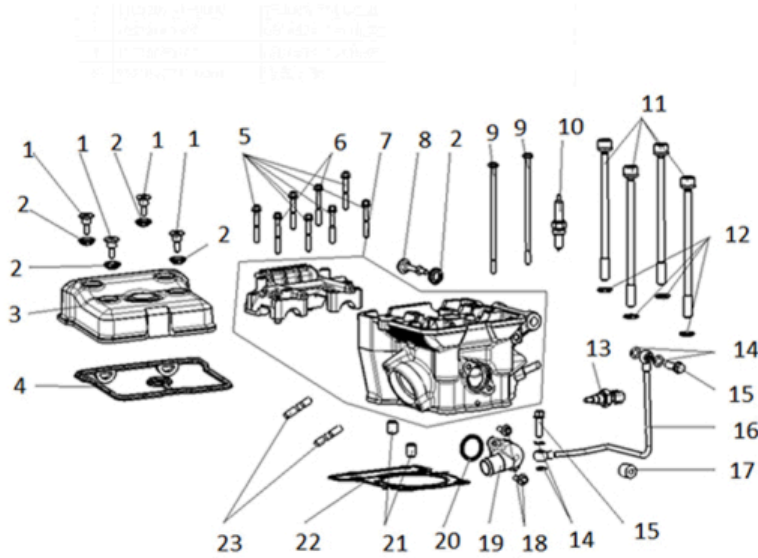


1

FORK OPENING TOOL RALLY 307
0/000.130.4703 (u. 1)

MOTOR AVENTURA 307 RALLY

CYLINDER HEAD



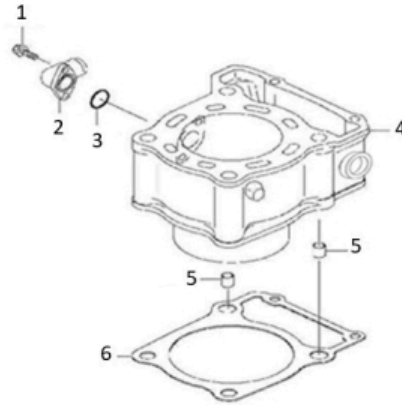
1	CYLINDER HEAD COVER SCREW M6 0/000.460.4774 (u. 4)
2	CYLINDER HEAD COVER SCREW GASKET 0/000.490.4720 (u. 5)
3	RALLY 307 CYLINDER HEAD COVER 0/000.350.4705 (u. 1)
4	CYLINDER HEAD COVER GASKET 0/000.490.4707 (u. 1)
5	SCREW M6x40 0/000.460.4752 (u. 6)
6	SCREW M6x45 0/000.460.4760 (u. 2)
7	RALLY 307 CYLINDER HEAD 0/005.770.4701 (u. 1)
8	SCREW M6x14 0/000.460.4775 (u. 1)
9	SCREW M6x135 0/000.460.4769 (u. 2)
10	NGK SPARK PLUG CR8E 0/005.110.4601 (u. 1)
11	SCREW M10x165 0/000.460.4773 (u. 4)
12	FLAT WASHER Ø8xØ10 0/000.440.4726 (u. 4)
13	ENGINE TEMPERATURE SENSOR 0/001.010.4703 (u. 1)
14	FLAT WASHER Ø8xØ14 0/000.440.4716 (u. 4)
15	SCREW M8x20 0/000.460.4768 (u. 2)

16	ENGINE OIL HOSE 0/000.290.4710 (u. 1)
17	ENGINE TUBE BEARING 0/000.960.4702 (u. 1)
18	SCREW M6x16 0/000.460.4749 (u. 2)
19	TUBE TO ENGINE CONNECTOR 0/000.290.4713 (u. 1)
20	O-RING 0/000.490.4717 (u. 1)
21	DOWEL PIN 0/000.240.4708 (u. 2)
22	CYLINDER HEAD GASKET 0/000.490.4706 (u. 1)
23	DOUBLE STUD M8x28 0/000.460.4771 (u. 2)

CYLINDER



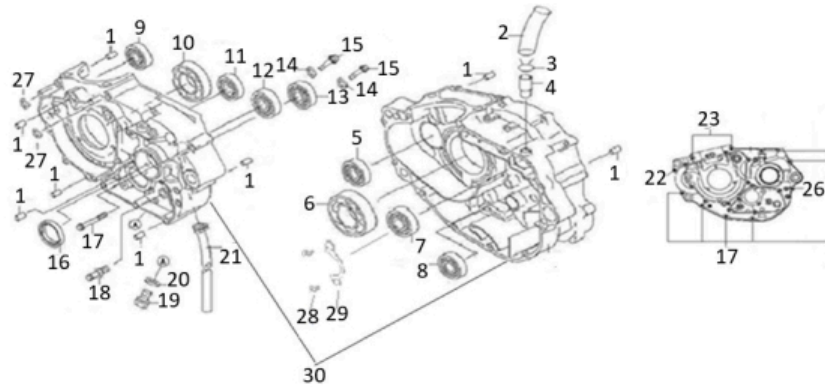
1	0/000.460.4749	0/000.460.4749
2	0/000.290.4714	0/000.290.4714
3	0/000.490.4716	0/000.490.4716
4	0/005.190.4701	0/005.190.4701
5	0/000.240.4708	0/000.240.4708
6	0/000.490.4705	0/000.490.4705



1	SCREW M6x16 0/000.460.4749 (u. 2)
2	TUBE TO CYLINDER CONNECTOR 0/000.290.4714 (u. 1)
3	O-RING TUBE TO CYLINDER CONNECTOR 0/000.490.4716 (u. 1)
4	CYLINDER 0/005.190.4701 (u. 1)
5	DOWEL PIN 0/000.240.4708 (u. 2)
6	CYLINDER GASKET 0/000.490.4705 (u. 1)

	ARANDELA AJUSTE VALVULA 2.800 0/000.440.4744 (u. 4)
	VALVE ADJUSTING SHIM 3.200 0/000.440.4739 (u. 4)
	VALVE ADJUSTING SHIM 3.300 0/000.440.4741 (u. 4)
	ARANDELA AJUSTE VALVULA 2.850 0/000.440.4745 (u. 4)
	VALVE ADJUSTING SHIM 2.550 0/000.440.4736 (u. 4)
	VALVE ADJUSTING SHIM 2.450 0/000.440.4734 (u. 4)
	VALVE ADJUSTMENT WASHER 2.050 0/000.440.4742 (u. 4)
	ARANDELA AJUSTE VALVULA 3.100 0/000.440.4749 (u. 4)
2	ARANDELA AJUSTE VALVULA 2.950 0/000.440.4747 (u. 4)
	ARANDELA AJUSTE VALVULA 3.000 0/000.440.4748 (u. 4)
	ARANDELA AJUSTE VALVULA 2.900 0/000.440.4746 (u. 4)
	VALVE ADJUSTING SHIM 2.400 0/000.440.4733 (u. 4)
	VALVE ADJUSTING SHIM 2.650 0/000.440.4738 (u. 4)
	VALVE ADJUSTING SHIM 3.250 0/000.440.4740 (u. 4)
	VALVE ADJUSTING SHIM 2.600 0/000.440.4737 (u. 4)
	VALVE ADJUSTING SHIM 2.500 0/000.440.4735 (u. 4)
	ARANDELA AJUSTE VALVULA 2.700 0/000.440.4743 (u. 4)
3	VALVE RETAINER CLIP 0/000.240.4703 (u. 8)
4	UPPER VALVE SPRING SEAT 0/000.480.4710 (u. 4)
7	VALVE STEM OIL SEAL 0/000.890.4701 (u. 4)
8	LOWER VALVE SPRING SEAT 0/000.480.4709 (u. 4)
9	EXHAUST VALVE 0/000.640.4701 (u. 2)
10	INTAKE VALVE 0/000.640.4702 (u. 2)
11	TIMING CHAIN PLATE 0/000.220.4703 (u. 1)
12	SCREW M6x10 0/000.460.4748 (u. 4)
13	TIMING CHAIN SPROCKET 0/000.500.4701 (u. 2)
14	EXHAUST CAMSHAFT 0/005.010.4701 (u. 1)
15	INTAKE CAMSHAFT 0/005.010.4702 (u. 1)

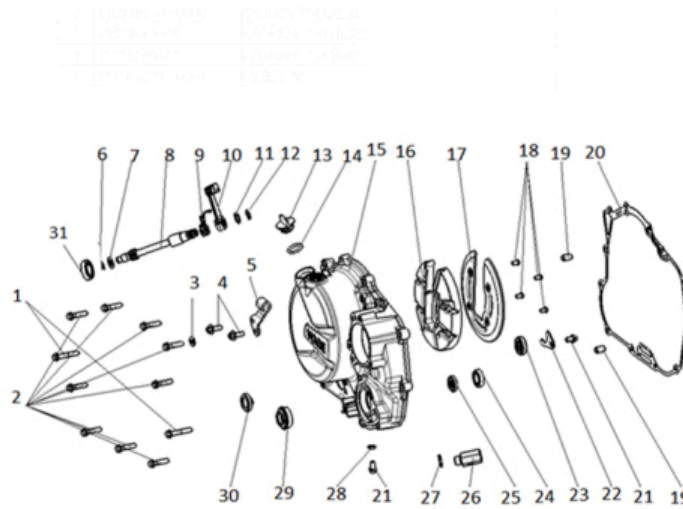
16	TIMING CHAIN 0/001.050.4701 (u. 1)
17	TIMING CHAIN GUIDE 0/000.710.4702 (u. 1)
18	TIMING CHAIN GUIDE BRACKET 0/000.980.4702 (u. 1)
19	SCREW M6x16 0/000.460.4749 (u. 1)
20	TIMING CHAIN GUIDE 2 0/000.710.4701 (u. 1)
21	TIMING CHAIN GUIDE 2 FIXING SCREW 0/000.460.4744 (u. 1)
22	TIMING CHAIN TENSIONER O-RING 0/000.490.4715 (u. 1)
23	TIMING CHAIN TENSIONER 0/000.380.4701 (u. 1)
24	SCREW M6x25 0/000.460.4751 (u. 2)
	TORN.ESP. DIN 6921 Hex.8 TX30 M6x25 Cal.10.9 GEOMET 0/000.460.9182 (u. 2)
25	TIMING CHAIN TENSIONER SPRING 0/000.470.4708 (u. 1)
26	WASHER Ø6xØ14 0/000.440.4719 (u. 1)
27	TENSIONER SCREW O-RING 0/000.490.4719 (u. 1)
28	TENSIONER SCREW 0/000.460.4745 (u. 1)
29	VALVE SPRING SET 0/000.470.4702 (u. 4)

CARTER

1	CRANKCASE JOINT DOWEL PIN 0/000.240.4707 (u. 8)
2	AIR HOSE 0/000.290.4708 (u. 1)
3	AIR HOSE CLAMP 0/000.680.4706 (u. 1)
4	TUBE TO ENGINE CONNECTOR 2 0/000.290.4712 (u. 1)
5	BEARING 1 0/000.960.4706 (u. 1)
6	BEARING 2 0/000.960.4707 (u. 1)
7	BEARING 4 0/000.960.4709 (u. 1)
8	BEARING 5 0/000.960.4710 (u. 1)
9	BEARING 1 0/000.960.4706 (u. 1)
10	BEARING 3 0/000.960.4708 (u. 1)
11	BEARING 6 0/000.960.4711 (u. 1)
12	BEARING 7 0/000.960.4712 (u. 1)
13	BEARING 8 0/000.960.4704 (u. 1)
14	WASHER Ø6xØ14 0/000.440.4719 (u. 2)
15	SCREW M6x14 0/000.460.4761 (u. 2)

16	OIL SEAL 2 0/000.890.4704 (u. 1)
17	SCREW M6x50 0/000.460.4754 (u. 6)
18	SCREW M10x38 0/000.460.4747 (u. 1)
19	OIL DRAIN SCREW 0/000.460.4743 (u. 1)
20	OIL DRAIN SCREW WASHER 0/000.440.4713 (u. 1)
21	OIL HOSE 2 0/000.290.4709 (u. 1)
22	SCREW M6x35 0/000.460.4755 (u. 1)
23	SCREW M6x70 0/000.460.4764 (u. 2)
26	SCREW M6x60 0/000.460.4756 (u. 1)
27	WASHER Ø6xØ12 0/000.440.4718 (u. 2)
28	SCREW M6x12 0/000.460.4777 (u. 2)
29	BEARING RETAINER PLATE 0/000.220.4707 (u. 1)
30	RALLY 307 CRANKCASE SET 0/005.700.4701 (u. 1)

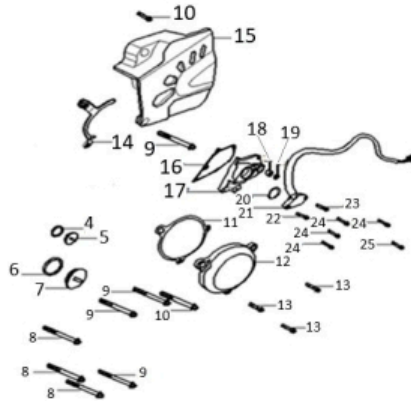
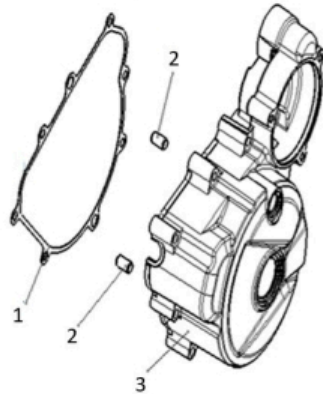
CLUTCH COVER



1	SCREW M6x35 0/000.460.4755 (u. 2)
2	TORN.ESP. DIN 6921 Hex.8 TX30 M6x25 Cal.10.9 GEOMET 0/000.460.9182 (u. 9) SCREW M6x25 0/000.460.4751 (u. 9)
3	FLAT WASHER Ø6xØ13 0/000.440.4714 (u. 1)
4	SCREW M6x16 0/000.460.4749 (u. 2)
5	CLUTCH CABLE PLATE 0/000.220.4706 (u. 1)
6	CLUTCH SHAFT CIRCLIP 0/000.300.4703 (u. 1)
7	WASHER Ø8xØ15 0/000.440.4728 (u. 1)
8	CLUTCH LEVER SHAFT 0/000.190.4704 (u. 1)
9	CLUTCH LEVER SPRING 0/000.470.4709 (u. 1)
10	CONTROL ARM, CLUTCH 0/005.430.4701 (u. 1)
11	WASHER Ø10xØ16 0/000.440.4727 (u. 1)
12	SNAP RING 0/000.300.4702 (u. 1)
13	OIL FILLER CAP 0/000.410.4704 (u. 1)
14	OIL FILLER CAP GASKET 0/000.490.4714 (u. 1)

15	ENGINE CLUTCH COVER 0/000.350.4703 (u. 1)
16	PAD CUSHION 0/000.470.4701 (u. 1)
17	COVER CUSHION PAD 0/000.350.4706 (u. 1)
18	SCREW M5x8 0/000.460.4776 (u. 4)
19	CRANKCASE JOINT DOWEL PIN 0/000.240.4707 (u. 2)
20	CLUTCH COVER GASKET 0/000.490.4703 (u. 1)
21	SCREW M6x10 0/000.460.4765 (u. 2)
22	CLUTCH CABLE PLATE 0/000.220.4706 (u. 1)
23	OIL SEAL 4 0/000.890.4706 (u. 1)
24	BEARING 0/000.960.4701 (u. 1)
25	OIL SEAL 1 0/000.890.4703 (u. 1)
26	OIL CONTROL VALVE 0/000.640.4703 (u. 1)
27	WASHER Ø12xØ17 0/000.440.4725 (u. 1)
28	WASHER Ø6xØ12X1.2 0/000.440.4715 (u. 1)
29	HYDROSEAL 0/000.890.4702 (u. 1)
30	OIL LEVEL SIGHT GLASS 0/000.410.4703 (u. 1)
31	OIL SEAL 5 0/000.890.4707 (u. 1)

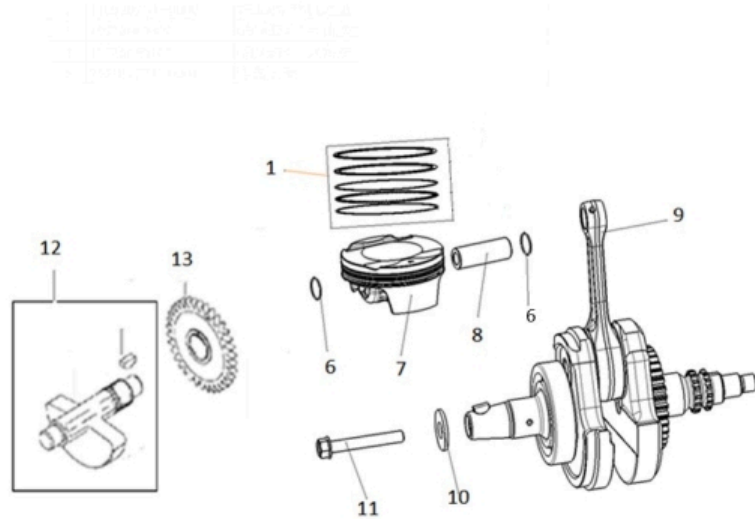
RIGHT COVER



1	JUNTA TAPA LH MOTOR 0/000.490.4701 (u. 1)
2	CRANKCASE JOINT DOWEL PIN 0/000.240.4707 (u. 2)
3	LEFT ENGINE COVER 0/000.350.4701 (u. 1)
4	O-RING 0/000.490.4713 (u. 1)
5	INSPECTION CAP 0/000.410.4702 (u. 1)
6	O-RING 2 0/000.490.4712 (u. 1)
7	CAP 0/000.410.4701 (u. 1)
8	SCREW M6X40 0/000.460.4753 (u. 5)
9	SCREW M6x45 0/000.460.4759 (u. 2)
10	SCREW M6x30 0/000.460.4763 (u. 1)
11	GEAR CHAMBER COVER GASKET 0/000.490.4702 (u. 1)
12	GEAR CHAMBER COVER 0/000.350.4702 (u. 1)
13	SCREW M6x20 0/000.460.4750 (u. 3)
14	SPROCKET GUARD BRACKET 0/000.980.4730 (u. 1)
15	CHAIN SPROCKET GUARD 0/000.220.4701 (u. 1)

16	GEARBOX COVER GASKET 0/000.490.4704 (u. 1)
17	GEARBOX COVER 0/000.350.4704 (u. 1)
18	BEARING 0/000.960.4705 (u. 1)
19	OIL SEAL 3 0/000.890.4705 (u. 1)
20	O-RING 2 0/000.490.4712 (u. 1)
21	GEAR SENSOR 0/001.010.4702 (u. 1)
22	SCREW M6x65 0/000.460.4758 (u. 1)
23	TORN.ESP. DIN 6921 Hex.8 TX30 M6x25 Cal.10.9 GEOMET 0/000.460.9182 (u. 3)
	SCREW M6x25 0/000.460.4751 (u. 3)
24	SCREW M6x20 0/000.460.4750 (u. 2)
25	SCREW M6x85 0/000.460.4762 (u. 1)

CRANKSHAFT - PISTON - BALANCER SHAFT

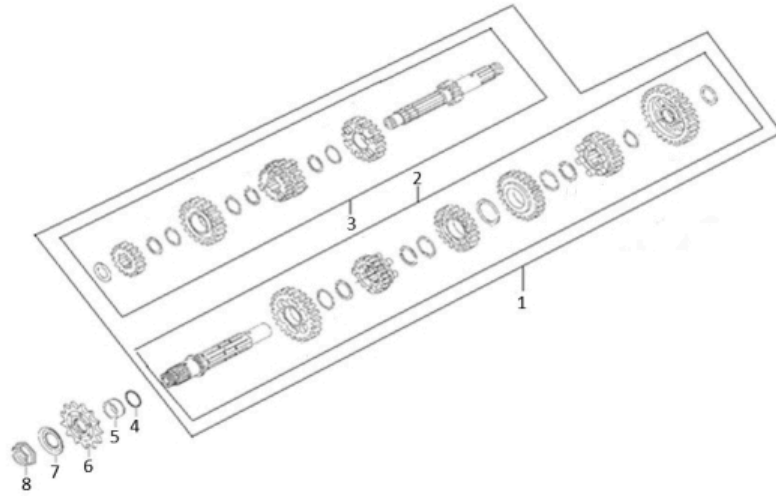


1	PISTON RING SET 0/000.240.4702 (u. 1)
6	PISTON PIN CIRCLIP 0/000.240.4706 (u. 1)
7	PISTON 0/005.711.4701 (u. 1)
8	PISTON PIN 0/000.190.4702 (u. 1)
9	CONNECTING ROD ASSEMBLY 0/005.380.4701 (u. 1)
10	WASHER Ø12xØ29 0/000.440.4720 (u. 1)
11	SCREW M12X50 0/000.460.4767 (u. 1)
12	BALANCER SHAFT 0/000.190.4703 (u. 1)
13	BALANCER SHAFT GEAR 0/005.400.4710 (u. 1)

GEARBOX

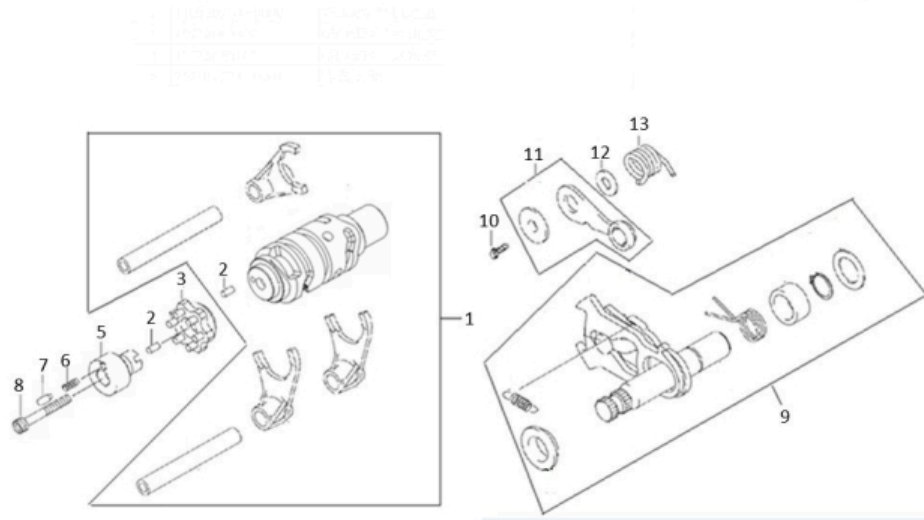


01	MAINSHAFT ASSEMBLY	0/005.400.4712
02	COUNTERSHAFT ASSEMBLY	0/005.400.4713
03	MAINSHAFT KIT	0/005.400.4718



1	MAINSHAFT & COUNTERSHAFT KIT 0/005.400.4718 (u. 1)
2	COUNTERSHAFT ASSEMBLY 0/005.400.4713 (u. 1)
3	MAINSHAFT ASSEMBLY 0/005.400.4712 (u. 1)
4	COUNTERSHAFT O RING 0/000.490.4718 (u. 1)
5	COUNTERSHAFT BUSHING 0/000.480.4713 (u. 1)
6	DRIVING SPROCKET 0/005.400.4714 (u. 1)
7	COUNTERSHAFT WASHER 0/000.440.4711 (u. 1)
8	NUT M20 0/000.340.4719 (u. 1)

SELECTOR SHAFT

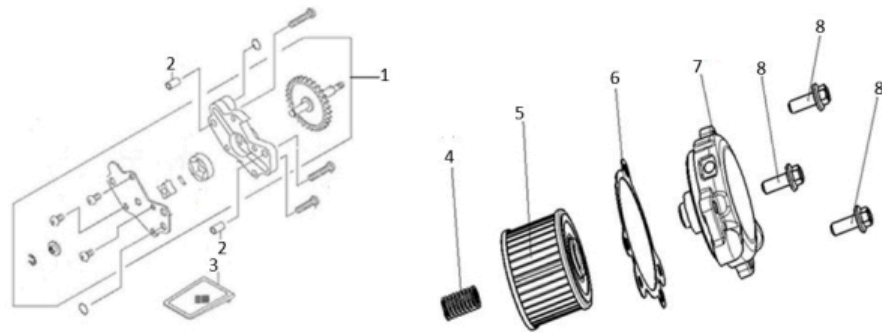


1	DESMODROMIC ASSEMBLY + GEAR SHIFT FORKS 0/005.090.4701 (u. 1)
2	PIN 0/000.240.4709 (u. 2)
3	CHANGE DRUM HOLDER 0/005.090.4702 (u. 1)
5	DESMODROMIC STAR STOPPER 0/005.090.4703 (u. 1)
6	SPRING 0/000.470.4706 (u. 1)
7	PIN 0/000.240.4705 (u. 1)
8	SCREW M6X35 0/000.460.4772 (u. 1)
9	COMPLETE GEAR SHIFT SHAFT 0/005.010.4703 (u. 1)
10	SCREW M6x20 0/000.460.4750 (u. 1)
11	COMPLETE GEAR STOPPER 0/005.560.4701 (u. 1)
12	WASHER Ø6xØ13 0/000.440.4717 (u. 1)
13	GEAR STOPPER SPRING 0/000.470.4710 (u. 1)

OIL PUMP



1	0/000.860.4701	0/000.860.4701	0/000.860.4701
2	0/000.240.4707	0/000.240.4707	0/000.240.4707
3	0/001.070.4701	0/001.070.4701	0/001.070.4701
4	0/000.470.4707	0/000.470.4707	0/000.470.4707
5	0/001.070.4702	0/001.070.4702	0/001.070.4702
6	0/000.490.4708	0/000.490.4708	0/000.490.4708
7	0/000.350.4707	0/000.350.4707	0/000.350.4707
8	0/000.460.4749	0/000.460.4749	0/000.460.4749

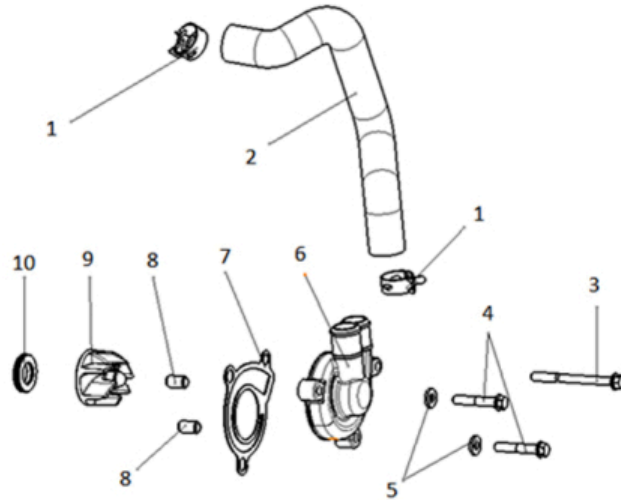


1	OIL PUMP ASSEMBLY 0/000.860.4701 (u. 1)
2	CRANKCASE JOINT DOWEL PIN 0/000.240.4707 (u. 2)
3	OIL PUMP FILTER 0/001.070.4701 (u. 1)
4	COMPRESSION SPRING 0/000.470.4707 (u. 1)
5	SECONDARY OIL PUMP FILTER 0/001.070.4702 (u. 1)
6	OIL FILTER COVER GASKET 0/000.490.4708 (u. 1)
7	OIL FILTER COVER 0/000.350.4707 (u. 1)
8	SCREW M6x16 0/000.460.4749 (u. 3)

COOLING SYSTEM

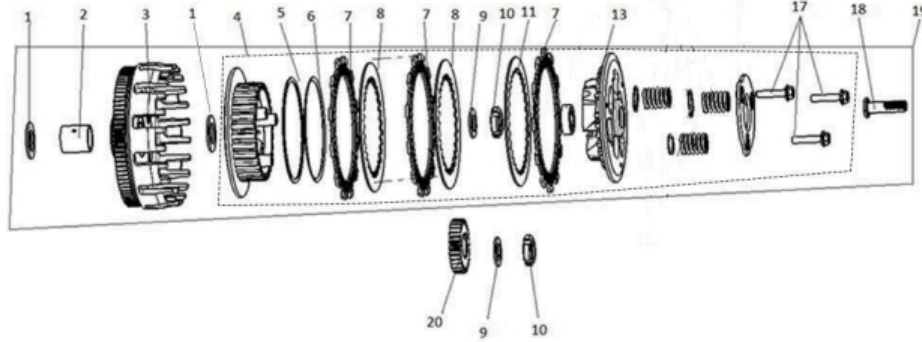


1	WATER PUMP HOSE CLAMP	0/000.680.4707	(u. 2)
2	WATER PUMP HOSE	0/000.290.4711	(u. 1)
3	SCREW M6x65	0/000.460.4758	(u. 1)
4	SCREW M6x35	0/000.460.4755	(u. 2)
5	FLAT WASHER Ø6xØ13	0/000.440.4714	(u. 2)
6	WATER PUMP COVER	0/000.350.4708	(u. 1)
7	WATER PUMP COVER GASKET	0/000.490.4709	(u. 1)
8	CRANKCASE JOINT DOWEL PIN	0/000.240.4707	(u. 2)
9	WATER PUMP IMPELLER	0/005.220.4701	(u. 1)
10	WATER PUMP SEAL RING	0/000.300.4701	(u. 1)



1	WATER PUMP HOSE CLAMP 0/000.680.4707 (u. 2)
2	WATER PUMP HOSE 0/000.290.4711 (u. 1)
3	SCREW M6x65 0/000.460.4758 (u. 1)
4	SCREW M6x35 0/000.460.4755 (u. 2)
5	FLAT WASHER Ø6xØ13 0/000.440.4714 (u. 2)
6	WATER PUMP COVER 0/000.350.4708 (u. 1)
7	WATER PUMP COVER GASKET 0/000.490.4709 (u. 1)
8	CRANKCASE JOINT DOWEL PIN 0/000.240.4707 (u. 2)
9	WATER PUMP IMPELLER 0/005.220.4701 (u. 1)
10	WATER PUMP SEAL RING 0/000.300.4701 (u. 1)

EMBRAGUE



1	CLUTCH WASHER 0/000.440.4721 (u. 2)
2	CLUTCH BASKET BUSHING 0/000.480.4712 (u. 1)
3	CLUTCH BASKET 0/000.017.4701 (u. 1)
4	CLUTCH INNER HUB 0/000.017.4702 (u. 1) - ONLY AVAILABLE IN SETS FROM POS. 4 TO 17
5	CLUTCH PRESSURE WASHER 1 0/000.440.4722 (u. 1)
6	CLUTCH PRESSURE WASHER 2 0/000.440.4730 (u. 1)
7	CLUTCH FRICTION PLATE 0/005.350.4701 (u. 6)
8	DRIVEN FRICTION PLATE 0/005.350.4702 (u. 4)
9	CLUTCH PLATES WASHER 0/000.440.4729 (u. 2)
10	CLUTCH NUT M16 0/000.340.4720 (u. 1)
11	SECONDARY DRIVEN FRICTION PLATE 0/005.350.4703 (u. 1)
13	CLUTCH CLAMP PLATE 0/000.017.4704 (u. 1)
17	SCREW M6x30 0/000.460.4770 (u. 3)
18	CLUTCH PUSH ROD 0/000.460.4746 (u. 1)
19	CJTO EMBRAGUE COMPLETO 0/000.017.4705 (u. 1)

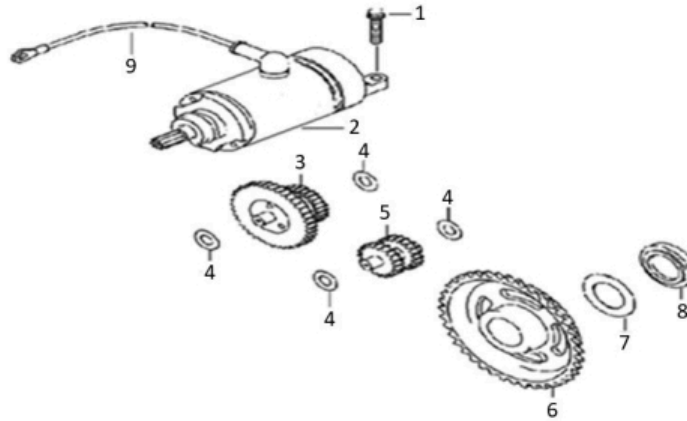
Obsolete

20	PRIMARY DRIVE GEAR 0/005.400.4711 (u. 1)
----	---

STARTER

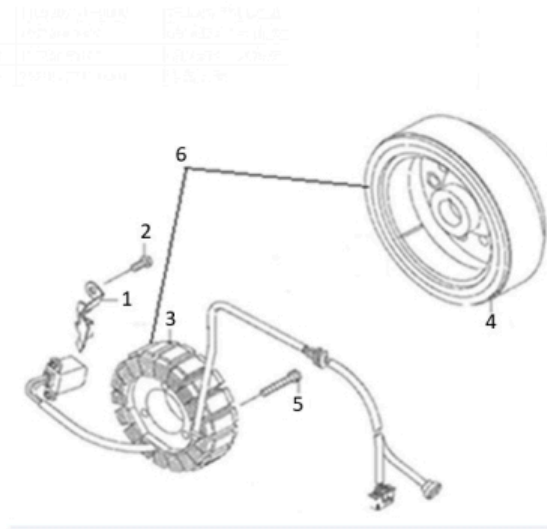


1	0/000.460.4763	2	0/005.082.4702
3	0/005.400.4715	4	0/000.440.4723
5	0/005.400.4716	6	0/005.400.4717
7	0/000.440.4724	8	0/000.480.4714



1	SCREW M6x30 0/000.460.4763 (u. 2)
2	STARTER MOTOR 0/005.082.4702 (u. 1)
3	DOUBLE STARTER GEAR 0/005.400.4715 (u. 1)
4	STARTER WASHER 0/000.440.4723 (u. 4)
5	STARTING MID GEAR 0/005.400.4716 (u. 1)
6	STARTER GEAR 0/005.400.4717 (u. 1)
7	WASHER Ø27.5xØ44 0/000.440.4724 (u. 1)
8	STARTER BUSHING 0/000.480.4714 (u. 1)

STATOR ASSY.



1	STATOR CABLE CLIP 0/000.680.4703 (u. 1)
2	SCREW M5X16 0/000.460.4757 (u. 2)
3	STATOR 0/005.820.4703 (u. 1)
4	ROTOR 0/005.820.4702 (u. 1)
5	SCREW M5X30 0/000.460.4766 (u. 3)
6	ROTOR + STATOR ASSEMBLY 0/005.820.4701 (u. 1)